

PARTS LIST

CAUTION

- The parts identified by the \triangle symbol are important for the safety . Whenever replacing these parts, be sure to use specified ones to secure the safety .
- The parts not indicated in this Parts List and those which are filled with lines --- in the Parts No. columns will not be supplied .
- P. W. Board Ass'y will not be supplied, but those which are filled with the Parts No. in the Parts No. columns will be supplied .

ABBREVIATIONS OF RESISTORS, CAPACITORS AND TOLERANCES

RESISTORS		CAPACITORS	
C R	Carbon Resistor	C CAP.	Ceramic Capacitor
F R	Fusible Resistor	E CAP.	Electrolytic Capacitor
P R	Plate Resistor	M CAP.	Mylar Capacitor
V R	Variable Resistor	CH CAP.	Chip Capacitor
HV R	High Voltage Resistor	HV CAP.	High Voltage Capacitor
MF R	Metal Film Resistor	MF CAP.	Metalized Film Capacitor
MG R	Metal Glazed Resistor	MM CAP.	Metalized Mylar Capacitor
MP R	Metal Plate Resistor	MP CAP.	Metalized Polystyrol Capacitor
OM R	Metal Oxide Film Resistor	PP CAP.	Polypropylene Capacitor
CMF R	Coating Metal Film Resistor	PS CAP.	Polystyrol Capacitor
UNF R	Non-Flammable Resistor	TF CAP.	Thin Film Capacitor
CH V R	Chip Variable Resistor	MPP CAP.	Metalized Polypropylene Capacitor
CH MG R	Chip Metal Glazed Resistor	TAN. CAP.	Tantalum Capacitor
COMP. R	Composition Resistor	CH C CAP.	Chip Ceramic Capacitor
LPTC R	Linear Positive Temperature Coefficient Resistor	BP E CAP.	Bi-Polar Electrolytic Capacitor
		CH AL E CAP.	Chip Aluminum Electrolytic Capacitor
		CH AL BP CAP.	Chip Aluminum Bi-Polar Capacitor
		CH TAN. E CAP.	Chip Tantalum Electrolytic Capacitor
		CH AL BP E CAP.	Chip Tantalum Bi-Polar Electrolytic Capacitor

RESISTORS									
F	G	J	K	M	N	R	H	Z	P
±1%	±2%	±5%	±10%	±20%	±30%	+30% -10%	+50% -10%	+80% -20%	+100% 0%

CONTENTS

USING P.W. BOARD & REMOTE CONTROL UNIT	43
EXPLODED VIEW PARTS LIST-I	43
EXPLODED VIEW-I	43
EXPLODED VIEW PARTS LIST-II	44
EXPLODED VIEW-II	45
EXPLODED VIEW PARTS LIST-III [AV-25L33B/PH]	46
EXPLODED VIEW-III [AV-25L33B/PH]	46
PRINTED WIRING BOARD PARTS LIST [AV-25L33/PH]	
MAIN PW BOARD ASS'Y	47
REMOTE CONTROL UNIT PARTS LIST (RM-C1019-1H)	52
PRINTED WIRING BOARD PARTS LIST [AV-25L33B/PH]	
MAIN PW BOARD ASS'Y	53
REMOTE CONTROL UNIT PARTS LIST (RM-C1018-1H)	58
PACKING / PACKING PARTS LIST	59

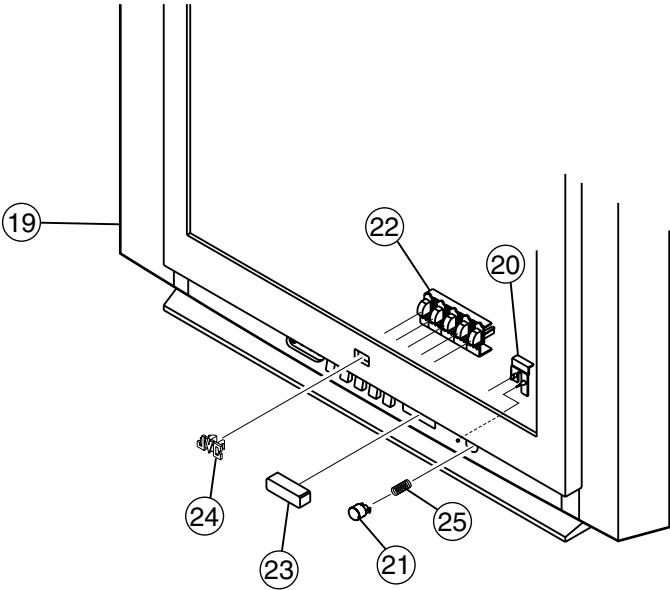
USING P.W. BOARD & REMOTE CONTROL UNIT

P.W.B ASS'Y	Model	AV-25L33/PH	AV-25L33B/PH
MAIN PWB (include CRT SOCKET PWB)		SCH-1112A-H2	SCH-1109A-H2
REMOTE CONTROL UNIT		RM-C1019-1H	RM-C1018-1H

EXPLODED VIEW PARTS LIST-I

△ Ref.No.	Part No.	Part Name	Description	Local
19	GG10133-026B-H	FRONT CABI		
20	GG30021-001A-H	LED LENS		
21	GG30019-003A-H	POWER KNOB		
22	GG20006-003A-H	CONTROL KNOB		
23	GG30020-001A-H	E.E. WINDOW		
24	GG40023-001A-H	JVC MARK		
25	CM35235-003-H	SPRING		

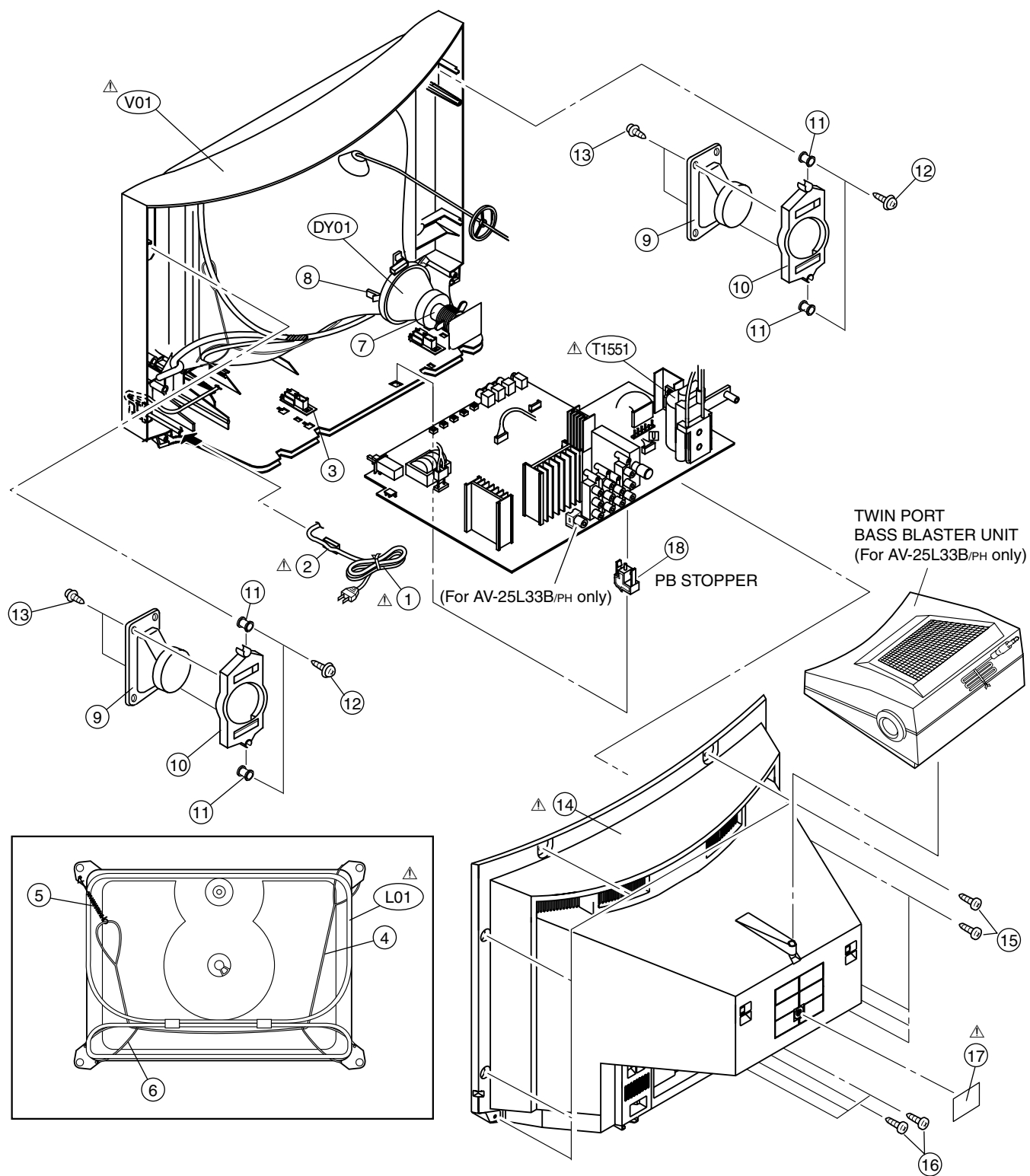
EXPLODED VIEW-I



EXPLODED VIEW PARTS LIST-II

△ Ref.No.	Part No.	Part Name	Description	Local
△ V01	A60LVY196X	PICTURE TUBE		
△ L01	QQW0119-001	DEG COIL		
△ DY01	QQD0078-002	DEFLECTION YOKE		
△ T1551	QQH0141-001	FBT		
△ 1	QMPR380-165-K2	POWER CORD		
△ 2	CM47005-A01-H	CORD CLAMP		
3	CM36623-B01-H	CHASSIS RAIL	(X2)	
4	CHGB0028-0A	BRAIDED ASS'Y		
5	A48457-3-H	SPRING		
6	CHGB0017-0C	BRAIDED WIRE	(X2)	
7	A75034-B	PC MAGNET		
8	CE40764-00A	WEDGE ASS'Y	(X4)	
9	QAS0083-001	SPEAKER	(X2) SP01, SP02	
10	LC20371-001D-H	SP HOLDER	(X2)	
11	LC40226-003A-H	SPACER	(X4)	
12	LC40317-002A-H	TAPPING SCREW	(X4)	
13	QYSBSB4012Z	TAPPING SCREW	(X4)	
△ 14	GG10134-004A-H	REAR COVER	[AV-25L33 _{PH}]	
△ 14	GG10134-005A-H	REAR COVER	[AV-25L33B _{PH}]	
15	QYSBSFG4016Z	TAPPING SCREW	(X9)	
16	QYSBSF3010Z	TAPPING SCREW	(X4)	
△ 17	GG20024-001B-H	RATING LABEL		
18	CM48144-002-H	PB STOPPER		

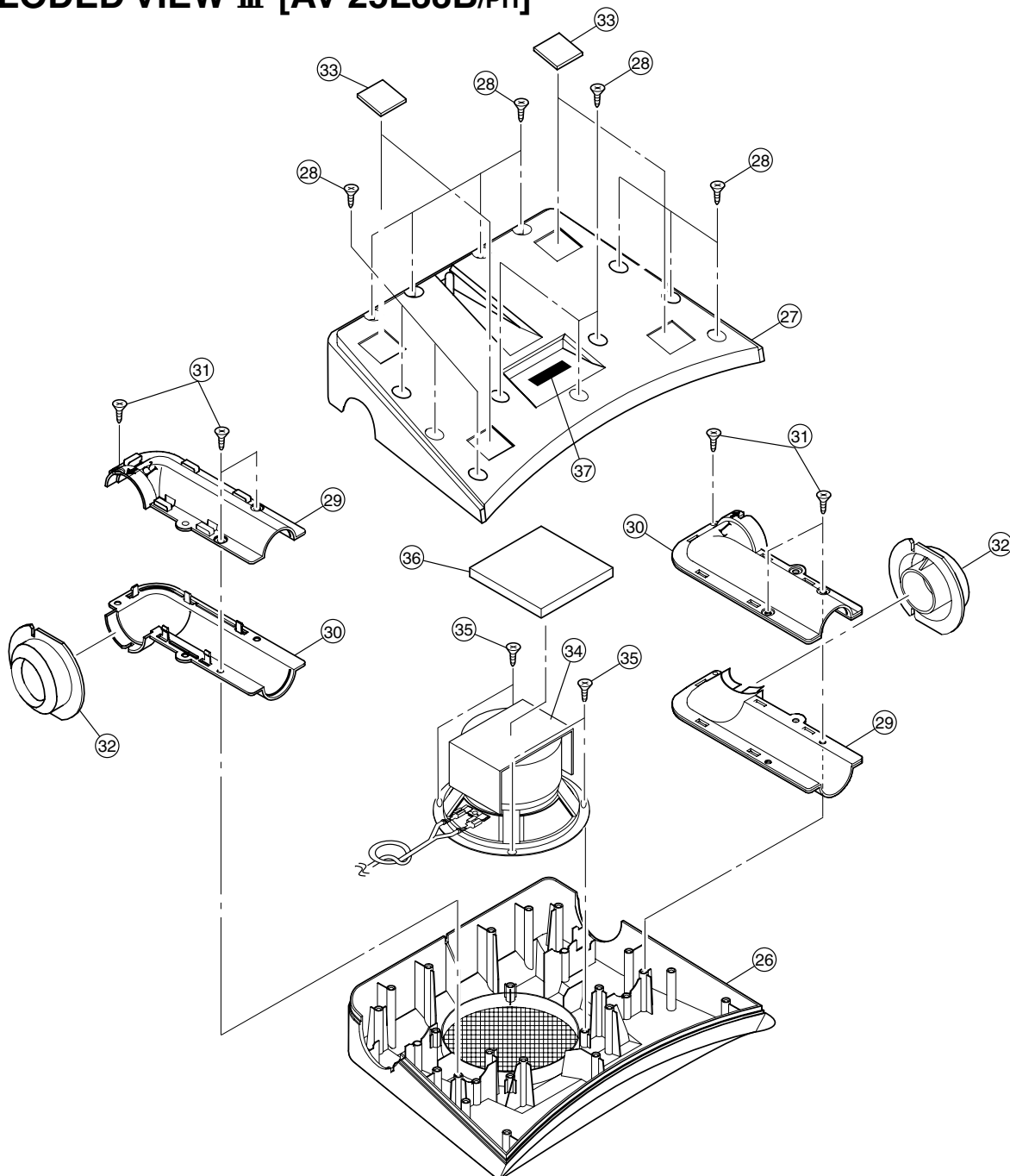
EXPLODED VIEW-II



EXPLODED VIEW PARTS LIST-III [AV-25L33B/PH]

△ Ref.No.	Part No.	Part Name	Description	Local
26	GG10140-001C-H	BASS TOP COVER		
27	GG10141-001C-H	BASS BOTTOM COVER		
28	QYSBSFG4016Z	TAPPING SCREW	(X13)	
29	GG20007-001C-H	BASS INT.DUCT R	(X2)	
30	GG20007-002C-H	BASS INT.DUCT L	(X2)	
31	QYSBSFG4016Z	TAPPING SCREW	(X6)	
32	GG30022-001A-H	BASS DUCT R	(X2)	
33	LC40352-001A-H	RUBBER SHEET	(X4)	
34	QAS0118-001	BASS SPEAKER		
35	QYSBSFG4016Z	TAPPING SCREW	(X4)	
36	LC41211-001A	SOUND ABSORBER		
37	GG40028-001A	SEAL LABEL		

EXPLODED VIEW-III [AV-25L33B/PH]



PRINTED WIRING BOARD PARTS LIST [AV-25L33/PH]

MAIN PW BOARD ASS'Y(SCH-1112A-H2)

△	Symbol No.	Part No.	Part Name	Description	Local	△	Symbol No.	Part No.	Part Name	Description	Local
RESISTOR						RESISTOR					
	R1001	NRSA63J-221X	MG R	220Ω 1/16W	J		R1425	NRSA63J-683X	MG R	68kΩ 1/16W	J
	R1002	NRSA63J-221X	MG R	220Ω 1/16W	J		R1480	QRE121J-681Y	C R	680Ω 1/2W	J
	R1003	NRSA63J-392X	MG R	3.9kΩ 1/16W	J		R1481	NRSA63J-223X	MG R	22kΩ 1/16W	J
	R1004	NRSA63J-221X	MG R	220Ω 1/16W	J		R1482	NRSA63J-562X	MG R	5.6kΩ 1/16W	J
	R1005	QQR1114-001Z	FERRITE BEADS				R1483	NRSA63J-823X	MG R	82kΩ 1/16W	J
	R1006	NRSA63J-273X	MG R	27kΩ 1/16W	J		R1484	NRSA63J-562X	MG R	5.6kΩ 1/16W	J
	R1007	NRSA63J-750X	MG R	75Ω 1/16W	J		R1485	NRSA63J-562X	MG R	5.6kΩ 1/16W	J
	R1101	NRSA63J-100X	MG R	10Ω 1/16W	J		R1486	NRSA63J-272X	MG R	2.7kΩ 1/16W	J
	R1102	NRSA63J-682X	MG R	6.8kΩ 1/16W	J		R1487	NRSA63J-333X	MG R	33kΩ 1/16W	J
	R1103	NRSA63J-272X	MG R	2.7kΩ 1/16W	J		R1489	NRSA63J-122X	MG R	1.2kΩ 1/16W	J
	R1104	NRSA63J-181X	MG R	180Ω 1/16W	J		R1490	NRSA63J-102X	MG R	1kΩ 1/16W	J
	R1105	NRSA63J-220X	MG R	22Ω 1/16W	J		R1491	NRSA63J-562X	MG R	5.6kΩ 1/16W	J
	R1106	NRSA63J-101X	MG R	100Ω 1/16W	J		R1492	NRSA63J-822X	MG R	8.2kΩ 1/16W	J
	R1107	NRSA63J-472X	MG R	4.7kΩ 1/16W	J		R1493	QRE121J-333Y	C R	33kΩ 1/2W	J
	R1108	NRSA63J-222X	MG R	2.2kΩ 1/16W	J		R1494	QRL039J-470	OM R	47Ω 3W	J
	R1109	NRSA63J-222X	MG R	2.2kΩ 1/16W	J		R1521	NRSA63J-101X	MG R	100Ω 1/16W	J
	R1110	NRSA63J-222X	MG R	2.2kΩ 1/16W	J		R1522	NRSA63J-102X	MG R	1kΩ 1/16W	J
	R1117	NRSA63J-102X	MG R	1kΩ 1/16W	J		R1524	QRL039J-560	OM R	56Ω 3W	J
	R1119	NRSA63J-102X	MG R	1kΩ 1/16W	J		R1526	QRL029J-271	OM R	270Ω 2W	J
	R1120	NRSA63J-471X	MG R	470Ω 1/16W	J		R1527	QRL039J-103	OM R	10kΩ 3W	J
	R1150	NRSA63J-331X	MG R	330Ω 1/16W	J		R1528	QRX029J-R47	MF R	0.47Ω 2W	J
	R1151	NRSA63J-222X	MG R	2.2kΩ 1/16W	J		R1529	QRX029J-R47	MF R	0.47Ω 2W	J
	R1152	NRSA63J-121X	MG R	120Ω 1/16W	J		R1531	NRSA63J-222X	MG R	2.2kΩ 1/16W	J
	R1153	NRSA63J-122X	MG R	1.2kΩ 1/16W	J	△	R1532	QRZ9017-4R7	F R	4.7Ω 1/4W	J
	R1154	NRSA63J-181X	MG R	180Ω 1/16W	J		R1540	QRL039J-470	OM R	47Ω 3W	J
	R1301	NRSA63J-222X	MG R	2.2kΩ 1/16W	J		R1541	QRE121J-124Y	C R	120kΩ 1/2W	J
	R1302	NRSA63J-222X	MG R	2.2kΩ 1/16W	J		R1542	QRE121J-124Y	C R	120kΩ 1/2W	J
	R1303	NRSA63J-562X	MG R	5.6kΩ 1/16W	J		R1543	QRE121J-471Y	C R	470Ω 1/2W	J
	R1304	NRSA63J-222X	MG R	2.2kΩ 1/16W	J		R1545	QRE121J-220Y	C R	22Ω 1/2W	J
	R1305	NRSA63J-222X	MG R	2.2kΩ 1/16W	J		R1546	QRE121J-822Y	C R	8.2kΩ 1/2W	J
	R1306	NRSA63J-562X	MG R	5.6kΩ 1/16W	J		R1591	QRE121J-472Y	C R	4.7kΩ 1/2W	J
	R1351	NRSA63J-151X	MG R	150Ω 1/16W	J		R1592	QRZ0221-3R9	OM R	3.9Ω 2W	J
	R1352	QRL029J-123	OM R	12kΩ 2W	J		R1593	NRSA63J-821X	MG R	820Ω 1/16W	J
	R1353	NRSA63J-182X	MG R	1.8kΩ 1/16W	J		R1594	QRE121J-183Y	C R	18kΩ 1/2W	J
	R1354	NRSA63J-331X	MG R	330Ω 1/16W	J		R1595	NRSA63J-222X	MG R	2.2kΩ 1/16W	J
	R1355	NRSA63J-101X	MG R	100Ω 1/16W	J		R1602	NRSA63J-271X	MG R	270Ω 1/16W	J
	R1356	QRE121J-102Y	C R	1kΩ 1/2W	J		R1603	NRSA63J-101X	MG R	100Ω 1/16W	J
	R1357	QRZ0107-152Z	C R	1.5kΩ 1W	K		R1604	NRSA63J-101X	MG R	100Ω 1/16W	J
	R1358	QRE121J-272Y	C R	2.7kΩ 1/2W	J		R1621	NRSA63J-0R0X	MG R	0.0Ω 1/16W	J
	R1359	QRE121J-561Y	C R	560Ω 1/2W	J		R1622	NRSA63J-0R0X	MG R	0.0Ω 1/16W	J
	R1361	NRSA63J-151X	MG R	150Ω 1/16W	J		R1624	NRSA63J-101X	MG R	100Ω 1/16W	J
	R1362	QRL029J-123	OM R	12kΩ 2W	J		R1625	NRSA63J-101X	MG R	100Ω 1/16W	J
	R1363	NRSA63J-182X	MG R	1.8kΩ 1/16W	J		R1626	NRSA63J-102X	MG R	1kΩ 1/16W	J
	R1364	NRSA63J-331X	MG R	330Ω 1/16W	J		R1627	NRSA63J-102X	MG R	1kΩ 1/16W	J
	R1365	NRSA63J-101X	MG R	100Ω 1/16W	J		R1650	NRSA63J-103X	MG R	10kΩ 1/16W	J
	R1366	QRE121J-102Y	C R	1kΩ 1/2W	J		R1651	NRSA63J-822X	MG R	8.2kΩ 1/16W	J
	R1367	QRZ0107-152Z	C R	1.5kΩ 1W	K		R1654	NRSA63J-103X	MG R	10kΩ 1/16W	J
	R1368	NRSA63J-332X	MG R	3.3kΩ 1/16W	J		R1655	NRSA63J-822X	MG R	8.2kΩ 1/16W	J
△	R1369	QRZ9017-150	F R	15Ω 1/4W	J		R1658	QRE121J-2R2Y	C R	2.2Ω 1/2W	J
	R1370	NRSA63J-151X	MG R	150Ω 1/16W	J		R1659	QRE121J-2R2Y	C R	2.2Ω 1/2W	J
	R1371	QRL029J-123	OM R	12kΩ 2W	J		R1660	NRSA63J-103X	MG R	10kΩ 1/16W	J
	R1372	NRSA63J-182X	MG R	1.8kΩ 1/16W	J		R1661	NRSA63J-683X	MG R	68kΩ 1/16W	J
	R1373	NRSA63J-331X	MG R	330Ω 1/16W	J		R1662	NRSA63J-333X	MG R	33kΩ 1/16W	J
	R1374	NRSA63J-101X	MG R	100Ω 1/16W	J		R1663	NRSA63J-103X	MG R	10kΩ 1/16W	J
	R1375	QRE121J-102Y	C R	1kΩ 1/2W	J		R1664	NRSA63J-222X	MG R	2.2kΩ 1/16W	J
	R1376	QRZ0107-152Z	C R	1.5kΩ 1W	K		R1686	NRSA63J-102X	MG R	1kΩ 1/16W	J
	R1377	NRSA63J-330X	MG R	33Ω 1/16W	J		R1687	NRSA63J-103X	MG R	10kΩ 1/16W	J
	R1378	NRSA63J-223X	MG R	22kΩ 1/16W	J		R1688	NRSA63J-273X	MG R	27kΩ 1/16W	J
	R1379	NRSA63J-103X	MG R	10kΩ 1/16W	J		R1690	NRSA63J-104X	MG R	100kΩ 1/16W	J
	R1383	QRE121J-394Y	C R	390kΩ 1/2W	J		R1698	NRSA63J-104X	MG R	100kΩ 1/16W	J
	R1384	NRSA63J-103X	MG R	10kΩ 1/16W	J		R1699	NRSA63J-104X	MG R	100kΩ 1/16W	J
	R1385	QRE141J-393Y	C R	39kΩ 1/4W	J		R1701	NRSA63J-101X	MG R	100Ω 1/16W	J
	R1401	NRSA63J-224X	MG R	220kΩ 1/16W	J		R1702	NRSA63J-101X	MG R	100Ω 1/16W	J
	R1403	NRSA63J-0R0X	MG R	0.0Ω 1/16W	J		R1703	NRSA63J-101X	MG R	100Ω 1/16W	J
	R1405	NRSA63J-682X	MG R	6.8kΩ 1/16W	J		R1704	NRSA63J-102X	MG R	1kΩ 1/16W	J
	R1406	NRSA63J-123X	MG R	12kΩ 1/16W	J		R1705	NRSA63J-102X	MG R	1kΩ 1/16W	J
	R1408	NRSA63J-682X	MG R	6.8kΩ 1/16W	J		R1706	NRSA63J-102X	MG R	1kΩ 1/16W	J
	R1410	NRSA63J-123X	MG R	12kΩ 1/16W	J		R1707	NRSA63J-472X	MG R	4.7kΩ 1/16W	J
	R1411	QRG01GJ-221	OM R	220Ω 1W	J		R1708	NRSA63J-472X	MG R	4.7kΩ 1/16W	J
	R1412	QRE121J-1R0Y	C R	1Ω 1/2W	J		R1709	NRSA63J-472X	MG R	4.7kΩ 1/16W	J
	R1413	QRX01GJ-2R7	MF R	2.7Ω 1W	J		R1710	NRSA63J-472X	MG R	4.7kΩ 1/16W	J
	R1414	QRE121J-8R2Y	C R	8.2Ω 1/2W	J		R1711	NRSA63J-101X	MG R	100Ω 1/16W	J

△ Symbol No.	Part No.	Part Name	Description	Local
RESISTOR				
R1712	NRSA63J-101X	MG R	100Ω 1/16W J	
R1713	NRSA63J-101X	MG R	100Ω 1/16W J	
R1714	NRSA63J-101X	MG R	100Ω 1/16W J	
R1715	NRSA63J-103X	MG R	10kΩ 1/16W J	
R1716	NRSA63J-103X	MG R	10kΩ 1/16W J	
R1717	NRSA63J-103X	MG R	10kΩ 1/16W J	
R1718	NRSA63J-221X	MG R	220Ω 1/16W J	
R1719	NRSA63J-221X	MG R	220Ω 1/16W J	
R1720	NRSA63J-102X	MG R	1kΩ 1/16W J	
R1721	NRSA63J-221X	MG R	220Ω 1/16W J	
R1722	NRSA63J-221X	MG R	220Ω 1/16W J	
R1723	NRSA63J-221X	MG R	220Ω 1/16W J	
R1724	NRSA63J-221X	MG R	220Ω 1/16W J	
R1725	NRSA63J-103X	MG R	10kΩ 1/16W J	
R1726	NRSA63J-472X	MG R	4.7kΩ 1/16W J	
R1727	NRSA63J-104X	MG R	100kΩ 1/16W J	
R1728	NRSA63J-103X	MG R	10kΩ 1/16W J	
R1729	NRSA63J-470X	MG R	47Ω 1/16W J	
R1730	NRSA63J-223X	MG R	22kΩ 1/16W J	
R1731	NRSA63J-101X	MG R	100Ω 1/16W J	
R1732	NRSA02F-393X	MG R	39kΩ 1/10W F	
R1733	NRSA63J-273X	MG R	27kΩ 1/16W J	
R1734	NRSA63J-391X	MG R	390Ω 1/16W J	
R1735	NRSA63J-104X	MG R	100kΩ 1/16W J	
R1736	NRSA63J-333X	MG R	33kΩ 1/16W J	
R1737	NRSA63J-272X	MG R	2.7kΩ 1/16W J	
R1738	NRSA63J-0R0X	MG R	0.0Ω 1/16W J	
R1739	NRSA63J-101X	MG R	100Ω 1/16W J	
R1740	NRSA63J-101X	MG R	100Ω 1/16W J	
R1741	NRSA63J-101X	MG R	100Ω 1/16W J	
R1742	NRSA63J-0R0X	MG R	0.0Ω 1/16W J	
R1743	NRSA63J-681X	MG R	680Ω 1/16W J	
R1744	NRSA63J-561X	MG R	560Ω 1/16W J	
R1745	NRSA63J-105X	MG R	1MΩ 1/16W J	
R1746	NRSA63J-333X	MG R	33kΩ 1/16W J	
R1747	NRSA63J-103X	MG R	10kΩ 1/16W J	
R1748	NRSA02J-475X	MG R	4.7MΩ 1/10W J	
R1749	NRSA02J-475X	MG R	4.7MΩ 1/10W J	
R1750	NRSA63J-0R0X	MG R	0.0Ω 1/16W J	
R1755	NRSA63J-101X	MG R	100Ω 1/16W J	
R1756	NRSA63J-101X	MG R	100Ω 1/16W J	
R1757	NRSA63J-222X	MG R	2.2kΩ 1/16W J	
R1758	NRSA63J-222X	MG R	2.2kΩ 1/16W J	
R1760	NRSA63J-682X	MG R	6.8kΩ 1/16W J	
R1770	QRE121J-271Y	C R	270Ω 1/2W J	
R1771	NRSA63J-102X	MG R	1kΩ 1/16W J	
R1772	QRE121J-271Y	C R	270Ω 1/2W J	
R1773	NRSA63J-102X	MG R	1kΩ 1/16W J	
R1775	NRSA63J-332X	MG R	3.3kΩ 1/16W J	
R1776	NRSA63J-392X	MG R	3.9kΩ 1/16W J	
R1777	NRSA63J-682X	MG R	6.8kΩ 1/16W J	
R1779	NRSA63J-272X	MG R	2.7kΩ 1/16W J	
R1780	NRSA63J-471X	MG R	470Ω 1/16W J	
R1781	NRSA63J-122X	MG R	1.2kΩ 1/16W J	
R1782	NRSA63J-181X	MG R	180Ω 1/16W J	
R1783	NRSA63J-221X	MG R	220Ω 1/16W J	
R1784	NRSA63J-331X	MG R	330Ω 1/16W J	
R1785	NRSA63J-471X	MG R	470Ω 1/16W J	
R1803	NRSA63J-333X	MG R	33kΩ 1/16W J	
R1804	NRSA63J-750X	MG R	75Ω 1/16W J	
R1805	NRSA63J-750X	MG R	75Ω 1/16W J	
R1806	NRSA63J-750X	MG R	75Ω 1/16W J	
R1807	NRSA63J-750X	MG R	75Ω 1/16W J	
R1808	NRSA63J-823X	MG R	82kΩ 1/16W J	
R1809	NRSA63J-391X	MG R	390Ω 1/16W J	
R1810	NRSA63J-823X	MG R	82kΩ 1/16W J	
R1811	NRSA63J-391X	MG R	390Ω 1/16W J	
R1812	NRSA63J-104X	MG R	100kΩ 1/16W J	
R1813	NRSA63J-222X	MG R	2.2kΩ 1/16W J	
R1815	NRSA63J-101X	MG R	100Ω 1/16W J	
R1818	NRSA63J-222X	MG R	2.2kΩ 1/16W J	
R1820	NRSA63J-101X	MG R	100Ω 1/16W J	

△ Symbol No.	Part No.	Part Name	Description	Local
RESISTOR				
R1821	NRSA63J-222X	MG R	2.2kΩ 1/16W J	
R1823	NRSA63J-101X	MG R	100Ω 1/16W J	
R1824	NRSA63J-222X	MG R	2.2kΩ 1/16W J	
R1826	NRSA63J-101X	MG R	100Ω 1/16W J	
R1829	NRSA63J-750X	MG R	75Ω 1/16W J	
R1830	NRSA63J-222X	MG R	2.2kΩ 1/16W J	
R1831	NRSA63J-222X	MG R	2.2kΩ 1/16W J	
R1832	NRSA63J-122X	MG R	1.2kΩ 1/16W J	
R1833	NRSA63J-102X	MG R	1kΩ 1/16W J	
R1834	NRSA63J-562X	MG R	5.6kΩ 1/16W J	
R1835	NRSA63J-562X	MG R	5.6kΩ 1/16W J	
R1836	NRSA63J-750X	MG R	75Ω 1/16W J	
R1837	NRSA63J-101X	MG R	100Ω 1/16W J	
R1838	QRK126J-121X	UNF R	120Ω 1/2W J	
R1839	QRE121J-221Y	C R	220Ω 1/2W J	
R1840	QRE121J-221Y	C R	220Ω 1/2W J	
R1841	NRSA63J-0R0X	MG R	0.0Ω 1/16W J	
R1842	NRSA63J-0R0X	MG R	0.0Ω 1/16W J	
R1843	NRSA63J-821X	MG R	820Ω 1/16W J	
R1844	NRSA63J-222X	MG R	2.2kΩ 1/16W J	
R1845	NRSA63J-102X	MG R	1kΩ 1/16W J	
R1846	NRSA63J-222X	MG R	2.2kΩ 1/16W J	
R1847	NRSA63J-103X	MG R	10kΩ 1/16W J	
R1848	NRSA63J-471X	MG R	470Ω 1/16W J	
R1849	NRSA63J-221X	MG R	220Ω 1/16W J	
R1880	NRSA63J-202X	MG R	2kΩ 1/16W J	
R1881	NRSA63J-103X	MG R	10kΩ 1/16W J	
R1882	NRSA63J-471X	MG R	470Ω 1/16W J	
R1883	NRSA63J-181X	MG R	180Ω 1/16W J	
R1902	QRF154K-2R2	UNF R	2.2Ω 15W K	
R1904	QRE121J-681Y	C R	680Ω 1/2W J	
R1905	QRM034J-R15	MP R	0.15Ω 3W J	
R1907	NRSA63J-563X	MG R	56kΩ 1/16W J	
R1908	QRL039J-333	OM R	33kΩ 3W J	
R1909	QRE121J-474Y	C R	470kΩ 1/2W J	
R1910	QRE121J-472Y	C R	4.7kΩ 1/2W J	
R1911	QRE121J-332Y	C R	3.3kΩ 1/2W J	
R1912	NRSA63J-152X	MG R	1.5kΩ 1/16W J	
△ R1915	QRZ0111-474	C R	470kΩ 1W K	
R1952	NRSA63J-332X	MG R	3.3kΩ 1/16W J	
R1953	NRSA63J-101X	MG R	100Ω 1/16W J	
R1957	QRE121J-6R8Y	C R	6.8Ω 1/2W J	
R1960	NRSA63J-391X	MG R	390Ω 1/16W J	
R1961	QRL029J-223	OM R	22kΩ 2W J	
R1962	NRSA63J-561X	MG R	560Ω 1/16W J	
R1963	QRE121J-103Y	C R	10kΩ 1/2W J	
R1964	NRSA63J-473X	MG R	47kΩ 1/16W J	
R1965	NRSA63J-0R0X	MG R	0.0Ω 1/16W J	
R1966	NRSA63J-682X	MG R	6.8kΩ 1/16W J	
R1967	NRSA63J-473X	MG R	47kΩ 1/16W J	
R1970	NRSA63J-153X	MG R	15kΩ 1/16W J	
R1971	NRSA63J-183X	MG R	18kΩ 1/16W J	
R1972	NRSA63J-391X	MG R	390Ω 1/16W J	
△ R1991	QRZ9046-825Z	C R	8.2MΩ 1W J	
CAPACITOR				
C1001	NCB31HK-103X	C CAP.	0.01μF 50V K	
C1002	QETN1HM-106Z	E CAP.	10μF 50V M	
C1003	QFV71HJ-104Z	MF CAP.	0.1μF 50V J	
C1004	QETN1CM-477Z	E CAP.	470μF 16V M	
C1005	NCB31HK-222X	C CAP.	2200pF 50V K	
C1006	QETN1CM-336Z	E CAP.	33μF 16V M	
C1007	NCB31HK-103X	C CAP.	0.01μF 50V K	
C1101	NCB31HK-472X	C CAP.	4700pF 50V K	
C1102	NCB31HK-472X	C CAP.	4700pF 50V K	
C1103	NCB31HK-472X	C CAP.	4700pF 50V K	
C1104	NCB31HK-472X	C CAP.	4700pF 50V K	
C1106	NDC21HJ-180X	C CAP.	18pF 50V J	
C1107	NCB31HK-103X	C CAP.	0.01μF 50V K	
C1109	QETN1HM-106Z	E CAP.	10μF 50V M	
C1150	NCB31HK-472X	C CAP.	4700pF 50V K	
C1151	NCB31HK-472X	C CAP.	4700pF 50V K	

△ Symbol No.	Part No.	Part Name	Description	Local	△ Symbol No.	Part No.	Part Name	Description	Local
CAPACITOR					CAPACITOR				
C1308	NCB31HK-103X	C CAP.	0.01μF 50V	K	C1632	QETN1HM-475Z	E CAP.	4.7μF 50V	M
C1310	NRSA63J-0R0X	MG R	0.0Ω 1/16W	J	C1633	QETN1HM-475Z	E CAP.	4.7μF 50V	M
C1350	NDC21HJ-471X	C CAP.	470pF 50V	J	C1634	QETN1HM-475Z	E CAP.	4.7μF 50V	M
C1351	NDC31HJ-681X	C CAP.	680pF 50V	J	C1635	QETN1HM-107Z	E CAP.	100μF 50V	M
C1352	QETN2EM-475Z	E CAP.	4.7μF 250V	M	C1636	QETN1HM-475Z	E CAP.	4.7μF 50V	M
C1353	QETN1HM-107Z	E CAP.	100μF 50V	M	C1637	QETN1HM-475Z	E CAP.	4.7μF 50V	M
C1354	QETN1HM-105Z	E CAP.	1μF 50V	M	C1638	NCB31EK-104X	C CAP.	0.1μF 25V	K
C1360	NDC21HJ-471X	C CAP.	470pF 50V	J	C1639	NCF21CZ-105X	C CAP.	1μF 16V	Z
C1361	NDC31HJ-681X	C CAP.	680pF 50V	J	C1640	QETN1HM-475Z	E CAP.	4.7μF 50V	M
C1370	NDC21HJ-471X	C CAP.	470pF 50V	J	C1641	NCB31EK-104X	C CAP.	0.1μF 25V	K
C1371	NDC31HJ-821X	C CAP.	820pF 50V	J	C1642	NCB31HK-472X	C CAP.	4700pF 50V	K
C1372	NRSA63J-273X	MG R	27kΩ 1/16W	J	C1644	QETN1HM-475Z	E CAP.	4.7μF 50V	M
C1374	QCZ0364-222	C CAP.	2200pF		C1645	QETN1HM-475Z	E CAP.	4.7μF 50V	M
C1375	QETN1CM-477Z	E CAP.	470μF 16V	M	C1650	QEH1HM-106Z	E CAP.	10μF 50V	M
C1401	QETN1HM-105Z	E CAP.	1μF 50V	M	C1651	QEH1VM-476Z	E CAP.	47μF 35V	M
C1402	QCB31HK-682Z	C CAP.	6800pF 50V	K	C1652	QETN1HM-106Z	E CAP.	10μF 50V	M
C1403	QEH1VM-227Z	E CAP.	220μF 35V	M	C1655	QEHQ1VM-108	E CAP.	1000μF 35V	M
C1406	QFLC2AJ-683Z	M CAP.	0.068μF 100V	J	C1656	QEHQ1VM-108	E CAP.	1000μF 35V	M
C1407	QCS32HJ-180Z	C CAP.	18pF 500V	J	C1659	NCF21HZ-224X	C CAP.	0.22μF 50V	Z
C1408	QFV71HJ-184Z	MF CAP.	0.18μF 50V	J	C1660	NCF21HZ-224X	C CAP.	0.22μF 50V	Z
C1411	NCF21HZ-334X	C CAP.	0.33μF 50V	Z	C1661	NCF21HZ-224X	C CAP.	0.22μF 50V	Z
C1412	NCF21HZ-334X	C CAP.	0.33μF 50V	Z	C1662	QEH1VM-227Z	E CAP.	220μF 35V	M
C1413	QFLC2AJ-563Z	M CAP.	0.056μF 100V	J	C1663	NCF21HZ-224X	C CAP.	0.22μF 50V	Z
C1422	QEHQ1VM-108	E CAP.	1000μF 35V	M	C1681	QETN1CM-227Z	E CAP.	220μF 16V	M
C1480	QETN1HM-106Z	E CAP.	10μF 50V	M	C1682	QETN1CM-227Z	E CAP.	220μF 16V	M
C1483	QEZ0195-475Z	BP E CAP.	4.7μF 50V	M	C1683	QETN1CM-336Z	E CAP.	33μF 16V	M
C1485	QETN1HM-226Z	E CAP.	22μF 50V	M	C1684	QETN1HM-106Z	E CAP.	10μF 50V	M
C1521	QETN1VM-476Z	E CAP.	47μF 35V	M	C1685	NRSA63J-0R0X	MG R	0.0Ω 1/16W	J
C1522	QFLC1HJ-332Z	M CAP.	3300pF 50V	J	C1686	NRSA63J-0R0X	MG R	0.0Ω 1/16W	J
C1523	QFLC1HJ-223Z	M CAP.	0.022μF 50V	J	C1701	QETN1CM-227Z	E CAP.	220μF 16V	M
C1524	QFZ0200-452	MPP CAP.	4500pF 1.5kVH±3%		C1702	QETN1HM-106Z	E CAP.	10μF 50V	M
C1525	QFZ0200-113	MPP CAP.	0.011μF 1.5kVH±3%		C1703	NDC31HJ-330X	C CAP.	33pF 50V	J
C1526	QFP32GJ-183	PP CAP.	0.018μF 400V	J	C1704	NDC31HJ-330X	C CAP.	33pF 50V	J
C1527	QFZ0199-154	MPP CAP.	0.15μF AC250V	J	C1705	NCB31HK-102X	C CAP.	1000pF 50V	K
C1528	QFZ0199-224	MPP CAP.	0.22μF AC250V	J	C1706	NCB21EK-224X	C CAP.	0.22μF 25V	K
C1529	QENC2AM-225Z	BP E CAP.	2.2μF 100V	M	C1707	QETN1CM-107Z	E CAP.	100μF 16V	M
C1530	QCB32HK-561Z	C CAP.	560pF 500V	K	C1709	QETN1CM-107Z	E CAP.	100μF 16V	M
C1531	QEH1EM-108Z	E CAP.	1000μF 25V	M	C1710	NCB21EK-224X	C CAP.	0.22μF 25V	K
C1533	QEH1EM-108Z	E CAP.	1000μF 25V	M	C1711	NCB31CK-104X	C CAP.	0.1μF 16V	K
C1535	QCB32HK-101Z	C CAP.	100pF 500V	K	C1713	NCB31CK-104X	C CAP.	0.1μF 16V	K
C1536	QFLC1HJ-103Z	M CAP.	0.01μF 50V	J	C1714	QETN1CM-476Z	E CAP.	47μF 16V	M
C1540	QFV71HJ-104Z	MF CAP.	0.1μF 50V	J	C1720	QETN1CM-476Z	E CAP.	47μF 16V	M
C1541	QETN2EM-226Z	E CAP.	22μF 250V	M	C1725	NCB31HK-681X	C CAP.	680pF 50V	K
C1542	QETN2EM-226Z	E CAP.	22μF 250V	M	C1730	NCB21EK-224X	C CAP.	0.22μF 25V	K
C1550	NCB31CK-104X	C CAP.	0.1μF 16V	K	C1731	NCB21EK-224X	C CAP.	0.22μF 25V	K
C1591	QETN1AM-107Z	E CAP.	100μF 10V	M	C1732	QETN1CM-107Z	E CAP.	100μF 16V	M
C1592	QETM2CM-227	E CAP.	220μF 160V	M	C1733	NCB31CK-104X	C CAP.	0.1μF 16V	K
C1593	QETN1EM-476Z	E CAP.	47μF 25V	M	C1734	NCB31HK-222X	C CAP.	2200pF 50V	K
C1602	NCB31HK-103X	C CAP.	0.01μF 50V	K	C1735	NCB31HK-222X	C CAP.	2200pF 50V	K
C1603	QETN1CM-107Z	E CAP.	100μF 16V	M	C1736	QETN1HM-105Z	E CAP.	1μF 50V	M
C1604	NCB31CK-104X	C CAP.	0.1μF 16V	K	C1737	QETN1HM-105Z	E CAP.	1μF 50V	M
C1606	NDC31HJ-2R0X	C CAP.	2.0pF 50V	J	C1738	NCB31CK-104X	C CAP.	0.1μF 16V	K
C1607	NDC31HJ-2R0X	C CAP.	2.0pF 50V	J	C1739	NFV41CJ-104X	MPP CAP.	0.1μF 16V	J
C1608	NCB31HK-103X	C CAP.	0.01μF 50V	K	C1740	QETN1HM-225Z	E CAP.	2.2μF 50V	M
C1609	NCB31HK-103X	C CAP.	0.01μF 50V	K	C1741	NCB31CK-104X	C CAP.	0.1μF 16V	K
C1610	QETN1HM-106Z	E CAP.	10μF 50V	M	C1742	NCB31CK-104X	C CAP.	0.1μF 16V	K
C1611	NCB31CK-104X	C CAP.	0.1μF 16V	K	C1743	QETN1CM-107Z	E CAP.	100μF 16V	M
C1612	QETN1HM-106Z	E CAP.	10μF 50V	M	C1744	NCB31HK-102X	C CAP.	1000pF 50V	K
C1613	NCB31CK-104X	C CAP.	0.1μF 16V	K	C1745	NCB31EK-473X	C CAP.	0.047μF 25V	K
C1615	QETN1HM-106Z	E CAP.	10μF 50V	M	C1746	NCB31EK-473X	C CAP.	0.047μF 25V	K
C1616	NCB31CK-104X	C CAP.	0.1μF 16V	K	C1747	NCB31EK-473X	C CAP.	0.047μF 25V	K
C1617	QETN1HM-106Z	E CAP.	10μF 50V	M	C1748	QETN1CM-476Z	E CAP.	47μF 16V	M
C1619	NCB31CK-104X	C CAP.	0.1μF 16V	K	C1749	QETN1HM-106Z	E CAP.	10μF 50V	M
C1620	QETN1HM-106Z	E CAP.	10μF 50V	M	C1751	NCB31CK-104X	C CAP.	0.1μF 16V	K
C1621	NCB31HK-102X	C CAP.	1000pF 50V	K	C1752	NCB31CK-104X	C CAP.	0.1μF 16V	K
C1622	NCB31HK-102X	C CAP.	1000pF 50V	K	C1753	NCB31CK-104X	C CAP.	0.1μF 16V	K
C1625	QETN1HM-475Z	E CAP.	4.7μF 50V	M	C1760	NCB31HK-104X	C CAP.	0.1μF 50V	K
C1626	QETN1HM-475Z	E CAP.	4.7μF 50V	M	C1761	QETN1CM-107Z	E CAP.	100μF 16V	M
C1628	NCB31HK-472X	C CAP.	4700pF 50V	K	C1770	QETN1HM-106Z	E CAP.	10μF 50V	M
C1629	NCB31EK-104X	C CAP.	0.1μF 25V	K	C1801	QETN1HM-106Z	E CAP.	10μF 50V	M
C1630	QETN1HM-475Z	E CAP.	4.7μF 50V	M	C1802	QETN1HM-106Z	E CAP.	10μF 50V	M
C1631	NCB31EK-104X	C CAP.	0.1μF 25V	K	C1803	QETN1HM-106Z	E CAP.	10μF 50V	M


△ Symbol No.	Part No.	Part Name	Description	Local
CAPACITOR				
C1804	QETN1HM-106Z	E CAP.	10μF 50V M	
C1805	NCB31HK-104X	C CAP.	0.1μF 50V K	
C1807	NCF31AZ-105X	C CAP.	1μF 10V Z	
C1808	NCF31AZ-105X	C CAP.	1μF 10V Z	
C1810	NCF31AZ-105X	C CAP.	1μF 10V Z	
C1811	NCB31HK-104X	C CAP.	0.1μF 50V K	
C1812	NCF31AZ-105X	C CAP.	1μF 10V Z	
C1813	NCB31HK-103X	C CAP.	0.01μF 50V K	
C1814	NCB31HK-104X	C CAP.	0.1μF 50V K	
C1815	NCF31AZ-105X	C CAP.	1μF 10V Z	
C1817	NCF31AZ-105X	C CAP.	1μF 10V Z	
C1819	NCB31HK-104X	C CAP.	0.1μF 50V K	
C1820	NCF31AZ-105X	C CAP.	1μF 10V Z	
C1821	NCF31AZ-105X	C CAP.	1μF 10V Z	
C1822	QETN1CM-477Z	E CAP.	470μF 16V M	
C1823	QETN1CM-107Z	E CAP.	100μF 16V M	
C1824	QETN1CM-107Z	E CAP.	100μF 16V M	
C1825	NCB31HK-103X	C CAP.	0.01μF 50V K	
C1826	NCB31HK-104X	C CAP.	0.1μF 50V K	
C1827	NCB31HK-103X	C CAP.	0.01μF 50V K	
C1829	NCB31HK-103X	C CAP.	0.01μF 50V K	
C1830	NCB31HK-103X	C CAP.	0.01μF 50V K	
C1831	NCB31HK-103X	C CAP.	0.01μF 50V K	
C1833	QETN1HM-226Z	E CAP.	22μF 50V M	
△ C1834	NDC31HJ-181X	C CAP.	180pF 50V J	
△ C1901	QFZ9075-104	MPP CAP.	0.1μF	
△ C1902	QFZ9075-473	MPP CAP.	0.047μF	
C1903	QCZ9015-102Z	C CAP.	1000pF AC250V Z	
C1904	QCZ9015-102Z	C CAP.	1000pF AC250V Z	
C1905	QCZ9015-102Z	C CAP.	1000pF AC250V Z	
△ C1906	QFZ9072-224	MM CAP.	0.22μF	
C1907	QEZO476-337	E CAP.	330μF 400V M	
C1908	QFZO209-222	MPP CAP.	2200pF	
C1910	NDC31HJ-471X	C CAP.	470pF 50V J	
C1911	QEHR1EM-227Z	E CAP.	220μF 25V M	
C1914	QETN1EM-227Z	E CAP.	220μF 25V M	
C1915	QFLC1HJ-152Z	M CAP.	1500pF 50V J	
C1916	NCB31HK-104X	C CAP.	0.1μF 50V K	
C1952	QCB32HK-471Z	C CAP.	470pF 500V K	
C1953	QEHQ1VM-108	E CAP.	1000μF 35V M	
C1954	NCB31HK-102X	C CAP.	1000pF 50V K	
C1955	QCB32HK-471Z	C CAP.	470pF 500V K	
C1956	QETN1VM-227Z	E CAP.	220μF 35V M	
C1957	QCB32HK-471Z	C CAP.	470pF 500V K	
C1958	QEHQ1EM-228	E CAP.	2200μF 25V M	
C1959	QCZO122-561	C CAP.	560pF 2000V K	
C1960	QEZO203-227	E CAP.	220μF 160V M	
C1961	QETN1HM-225Z	E CAP.	2.2μF 50V M	
C1962	QETN1HM-106Z	E CAP.	10μF 50V M	
C1964	QETN1CM-476Z	E CAP.	47μF 16V M	
C1965	QETN1HM-225Z	E CAP.	2.2μF 50V M	
C1968	NCB31CK-104X	C CAP.	0.1μF 16V K	
C1972	QEHR1VM-476Z	E CAP.	47μF 35V M	
C1973	QEHR1CM-107Z	E CAP.	100μF 16V M	
C1974	NCB31CK-104X	C CAP.	0.1μF 16V K	
C1975	QEHR1CM-227Z	E CAP.	220μF 16V M	
C1976	QEHR1CM-107Z	E CAP.	100μF 16V M	
C1977	QEHR1AM-477Z	E CAP.	470μF 10V M	
C1978	NCB31HK-104X	C CAP.	0.1μF 50V K	
C1980	QETN1CM-107Z	E CAP.	100μF 16V M	
△ C1991	QCZ9079-102	C CAP.	1000pF AC250V M	
△ C1992	QCZ9079-102	C CAP.	1000pF AC250V M	
△ C1993	QCZ9079-102	C CAP.	1000pF AC250V M	

TRANSFORMER


△ T1521	QQR1229-001	DRIVE TRANSF
△ T1551	QQH0141-001	FB TRANSF
△ T1901	QQS0165-001	SW TRANSF

△ Symbol No.	Part No.	Part Name	Description	Local
COIL				
L1001	CE42050-001Z	BEADS CORE		
L1002	CE42050-001Z	BEADS CORE		
L1101	QQLZ014-R82	COIL	0.82μH	
L1104	QQL244K-180Z	COIL	18μH	K
L1480	QQR1138-001	CHOKER COIL		
L1523	QQR1137-005	LINEARITY COIL		
L1524	QQLZ034-240	COIL	24μH	
L1540	QQL244J-5R6Z	COIL	5.6μH	J
L1601	QQL244K-4R7Z	COIL	4.7μH	K
L1701	QQL244K-100Z	COIL	10μH	K
L1702	QQL244K-100Z	COIL	10μH	K
L1731	QQL244J-5R6Z	COIL	5.6μH	J
L1732	QQL244J-5R6Z	COIL	5.6μH	J
L1951	QQLZ034-460	COIL	46μH	
L1953	QQL244J-5R6Z	COIL	5.6μH	J
L1954	QQL244J-5R6Z	COIL	5.6μH	J
DIODE				
D1101	DAN235K-X	SI. DIODE		
D1350	1SS244-T2	SI. DIODE		
D1352	RGP10J-5025-T3	SI. DIODE		
D1353	MA1111-X	SI. DIODE		
D1354	MA1111-X	SI. DIODE		
D1355	MA1111-X	SI. DIODE		
D1356	MA1111-X	SI. DIODE		
D1357	MA1111-X	SI. DIODE		
D1360	1SS244-T2	SI. DIODE		
D1370	1SS244-T2	SI. DIODE		
D1374	MA1111-X	SI. DIODE		
D1401	RGP10J-5025-T3	SI. DIODE		
D1402	MTZJ75-T2	ZENER DIODE		
D1405	1N4003-T2	SI. DIODE		
D1408	MA1111-X	SI. DIODE		
D1480	MTZJ4.3A-T2	ZENER DIODE		
D1521	RH3G-F1	SI. DIODE		
D1522	31DF6N-FC5	SI. DIODE		
D1523	RGP10J-5025-T3	SI. DIODE		
D1541	RGP10J-5025-T3	SI. DIODE		
D1550	MA1111-X	SI. DIODE		
D1551	RGP10J-5025-T3	SI. DIODE		
D1553	RGP10J-5025-T3	SI. DIODE		
D1554	RGP10J-5025-T3	SI. DIODE		
D1592	MA3075/H/-X	ZENER DIODE		
D1652	MA3330/L/-X	ZENER DIODE		
D1653	MA3330/L/-X	ZENER DIODE		
D1655	MA1111-X	SI. DIODE		
D1682	MA1111-X	SI. DIODE		
D1702	MA3024-X	ZENER DIODE		
D1703	MA3051/M/-X	ZENER DIODE		
D1704	MA3033-X	ZENER DIODE		
D1730	MA1111-X	SI. DIODE		
D1731	MA1111-X	SI. DIODE		
D1732	MA1111-X	SI. DIODE		
D1733	MA1111-X	SI. DIODE		
D1760	SLR-342VR-T16	LED		
D1770	MA1111-X	SI. DIODE		
D1771	P1241-04	PHOTO CONDUCTOR		
D1801	MA3120/M/-X	ZENER DIODE		
D1802	MA3120/M/-X	ZENER DIODE		
D1807	MA3100/M/-X	ZENER DIODE		
D1808	MA3100/M/-X	ZENER DIODE		
D1901	GSIB460	BRIDGE DIODE		
D1903	MTZJ12C-T2	ZENER DIODE		
D1904	EG01C-T2	SI. DIODE		
D1906	EG01C-T2	SI. DIODE		
D1907	MA3150/M/-X	ZENER DIODE		
D1908	MTZJ27B-T2	ZENER DIODE		
D1909	MA1111-X	SI. DIODE		
D1910	MA1111-X	SI. DIODE		
D1911	RGP10J-TS-T3	SI. DIODE		
D1912	1SS133-T2	SI. DIODE		
D1914	ERC30-02L38	SI. DIODE		
D1952	ERC30-02L38	SI. DIODE		
D1953	RGP10J-5025-T3	SI. DIODE		

△ Symbol No.	Part No.	Part Name	Description	Local	△ Symbol No.	Part No.	Part Name	Description	Local
DIODE					OTHERS				
D1954	RGP30B-F1	SI. DIODE				LC30114-001C-H	LED HOLDER		
D1956	31DF6N-FC5	SI. DIODE				CM35921-005-H	CDS HOLDER		
D1964	MA3330/L-X	ZENER DIODE			CF1106	QAX0639-001Z	C TRAP		
D1965	1SS133-T2	SI. DIODE			CL1001	QZW0027-002	WIRE CLAMP		
D1966	MA3068/M-X	ZENER DIODE			CL1002	QZW0027-004	WIRE CLAMP		
D1968	MA111-X	SI. DIODE			CL1003	QZW0027-004	WIRE CLAMP		
D1969	MA111-X	SI. DIODE			△ CP1951	ICP-N75-Y	IC PROTECTOR		
D1971	MA111-X	SI. DIODE			△ CP1952	ICP-N50-Y	IC PROTECTOR		
TRANSISTOR					△ CP1953	ICP-N75-Y	IC PROTECTOR		
Q1101	2SC5083/L-P-T	TRANSISTOR			△ F1901	QMF51E2-4R0J4	FUSE		
Q1109	2SB709A/QR/-X	TRANSISTOR			FC1901	CEMG002-001Z	FUSE CLIP		
Q1111	2SD601A/QR/-X	TRANSISTOR			J1770	QNS0155-001	3.5 JACK		
Q1150	2SD601A/QR/-X	TRANSISTOR			J1771	QNN0282-003	PIN JACK		
Q1301	2SB709A/QR/-X	TRANSISTOR			J1772	QNN0282-002	PIN JACK		
Q1302	2SB709A/QR/-X	TRANSISTOR			J1773	QNN0282-001	PIN JACK		
Q1350	STC344-T	TRANSISTOR			J1801	QNN0349-001	PIN JACK		
Q1351	2SA1321-T	TRANSISTOR							
Q1352	2SB709A/QR/-X	TRANSISTOR			J1802	QNN0349-002	PIN JACK		
Q1360	STC344-T	TRANSISTOR			J1803	QNN0348-001	PIN JACK		
Q1361	2SA1321-T	TRANSISTOR			J1804	QNN0349-001	PIN JACK		
Q1370	STC344-T	TRANSISTOR			K1103	QQR1113-001Z	FERRITE BEADS		
Q1371	2SA1321-T	TRANSISTOR			K1104	QQR1113-001Z	FERRITE BEADS		
Q1374	2SD601A/QR/-X	TRANSISTOR			K1105	QQR1113-001Z	FERRITE BEADS		
Q1375	2SD601A/QR/-X	TRANSISTOR			K1106	QQR1113-001Z	FERRITE BEADS		
Q1376	2SD601A/QR/-X	TRANSISTOR			K1701	QQR1113-001Z	FERRITE BEADS		
Q1480	2SD1408/OY/-LB	POW TRANSISTOR			K1901	QQR1113-001Z	FERRITE BEADS		
Q1521	2SC2655/Y/-T	TRANSISTOR			K1902	QQR1114-001Z	FERRITE BEADS		
Q1522	2SD2634-YD	POW TRANSISTOR			K1903	QQR1114-001Z	FERRITE BEADS		
Q1591	2SA1208/ST/Z1-T	TRANSISTOR			K1951	QQR1113-001Z	FERRITE BEADS		
Q1592	UN2212-X	DIGI. TRANSISTOR			K1953	QQR1113-001Z	FERRITE BEADS		
Q1660	2SD601A/QR/-X	TRANSISTOR			K1954	QQR1113-001Z	FERRITE BEADS		
Q1661	2SD601A/QR/-X	TRANSISTOR			K1955	QQR1214-001Y	FERRITE BEADS		
Q1683	2SB709A/QR/-X	TRANSISTOR			△ LF1901	QQR0673-004	LINE FILTER		
Q1684	2SB709A/QR/-X	TRANSISTOR			△ LF1902	QQR1035-002	LINE FILTER		
Q1685	DTC323TK-X	DIGI. TRANSISTOR			△ PC1901	PC123F2	IC(PHOTO COUPLE		
Q1686	DTC323TK-X	DIGI. TRANSISTOR			△ RY1901	QSK0092-001	RELAY		
Q1701	2SB709A/QR/-X	TRANSISTOR			S1780	QSW0619-003Z	TACT SWITCH	MENU	
Q1702	2SB709A/QR/-X	TRANSISTOR			S1781	QSW0619-003Z	TACT SWITCH	CH-	
Q1703	FMC2A-X	D.TRANSISTOR			S1782	QSW0619-003Z	TACT SWITCH	CH+	
Q1720	2SB709A/QR/-X	TRANSISTOR			S1783	QSW0619-003Z	TACT SWITCH	VOL-	
Q1770	2SB709A/QR/-X	TRANSISTOR			S1784	QSW0619-003Z	TACT SWITCH	VOL+	
Q1801	DTC323TK-X	DIGI. TRANSISTOR			△ S1901	QSW0846-001	PUSH SWITCH	POWER	
Q1802	DTC323TK-X	DIGI. TRANSISTOR			SF1101	QAX0663-001	SAW FILTER		
Q1803	2SB709A/QR/-X	TRANSISTOR			SF1102	QAX0731-001	SAW FILTER		
Q1804	2SC1740S/QR/-T	TRANSISTOR			△ SK1351	QNZ0537-001	CRT SOCKET		
Q1860	2SD601A/QR/-X	TRANSISTOR			TH1901	QAD0134-4R5	P THERMISTOR		
Q1861	2SB709A/QR/-X	TRANSISTOR			TU1001	QAU0251-002	TUNER		
Q1862	2SB709A/QR/-X	TRANSISTOR			△ VA1901	QAF0052-621	VARISTOR		
Q1952	2SD601A/QR/-X	TRANSISTOR			W1003	QQR1114-001Z	FERRITE BEADS		
Q1953	2SD601A/QR/-X	TRANSISTOR			W1008	NRSA63J-0R0X	MG R	0.0Ω	1/16W J
Q1954	2SD601A/QR/-X	TRANSISTOR			W1010	NRSA63J-0R0X	MG R	0.0Ω	1/16W J
IC					W1052	NRSA63J-0R0X	MG R	0.0Ω	1/16W J
IC1401	AN5522	I.C(MONO-ANA)			W1071	NRSA63J-0R0X	MG R	0.0Ω	1/16W J
IC1480	UPC358G2-XE	I.C(MONOLITHIC)			W1096	NRSA63J-0R0X	MG R	0.0Ω	1/16W J
IC1601	MSP3445G-QG-B8	I.C(MONO-ANA)			W1239	NRSA63J-0R0X	MG R	0.0Ω	1/16W J
IC1602	NJW1138M-X	I.C(MONO-ANA)			W1257	NRSA63J-0R0X	MG R	0.0Ω	1/16W J
IC1650	AN5277	I.C(MONO-ANA)			W1307	NRSA63J-0R0X	MG R	0.0Ω	1/16W J
IC1701	TDA9386N23S0901	IC(MCU)			W1309	NRSA63J-0R0X	MG R	0.0Ω	1/16W J
IC1702	AT24C08-25L33PH	I.C(MEMORY-OTH)	(SERVICE)		W1317	NRSA63J-0R0X	MG R	0.0Ω	1/16W J
IC1760	GP1UM281QK	IR DETECT UNIT			W1322	NRSA63J-0R0X	MG R	0.0Ω	1/16W J
IC1801	MM1492AF	I.C(MONO-ANA)			W1325	NRSA63J-0R0X	MG R	0.0Ω	1/16W J
IC1901	STR-F6709A/F7	I.C(HYBRID)			W1326	NRSA63J-0R0X	MG R	0.0Ω	1/16W J
IC1951	SE135N	I.C(HYBRID)			W1329	QQR1114-001Z	FERRITE BEADS		
IC1972	R1141Q331B-X	REGULATE			W1330	NRSA63J-0R0X	MG R	0.0Ω	1/16W J
IC1974	AN80T36	REG IC			W1333	NRSA63J-0R0X	MG R	0.0Ω	1/16W J
					W1375	NRSA63J-0R0X	MG R	0.0Ω	1/16W J
					W1379	NRSA63J-0R0X	MG R	0.0Ω	1/16W J
					W1388	NRSA63J-0R0X	MG R	0.0Ω	1/16W J
					W1417	NRSA63J-0R0X	MG R	0.0Ω	1/16W J
					W1418	NRSA63J-0R0X	MG R	0.0Ω	1/16W J
					W1430	NRSA63J-0R0X	MG R	0.0Ω	1/16W J
					X1601	CE42546-001Z	X TAL		
					X1701	QAX0737-001	CRYSTAL		

	Symbol No.	Part No.	Part Name	Description	Local
OTHERS					
	Y1004	NRSA63J-0R0X	MG R	0.0Ω 1/16W	J
	Y1301	NRSA63J-0R0X	MG R	0.0Ω 1/16W	J
	Y1604	NRSA63J-0R0X	MG R	0.0Ω 1/16W	J
	Y1918	1SS133-T2	SI. DIODE		

REMOTE CONTROL UNIT PARTS
LIST (RM-C1019-1H)

	Ref.No	Part No.	Part Name	Description	Local
		25-1168F	BATTERY COVER		

	Symbol No.	Part No.	Part Name	Description	Local
---	------------	----------	-----------	-------------	-------

PRINTED WIRING BOARD PARTS LIST [AV-25L33B/PH]

MAIN PW BOARD ASS'Y(SCH-1109A-H2)

△	Symbol No.	Part No.	Part Name	Description	Local	△	Symbol No.	Part No.	Part Name	Description	Local
RESISTOR						RESISTOR					
	R1001	NRSA63J-221X	MG R	220Ω 1/16W	J		R1425	NRSA63J-683X	MG R	68kΩ 1/16W	J
	R1002	NRSA63J-221X	MG R	220Ω 1/16W	J		R1480	QRE121J-681Y	C R	680Ω 1/2W	J
	R1003	NRSA63J-392X	MG R	3.9kΩ 1/16W	J		R1481	NRSA63J-223X	MG R	22kΩ 1/16W	J
	R1004	NRSA63J-221X	MG R	220Ω 1/16W	J		R1482	NRSA63J-562X	MG R	5.6kΩ 1/16W	J
	R1006	NRSA63J-273X	MG R	27kΩ 1/16W	J		R1483	NRSA63J-823X	MG R	82kΩ 1/16W	J
	R1007	NRSA63J-750X	MG R	75Ω 1/16W	J		R1484	NRSA63J-562X	MG R	5.6kΩ 1/16W	J
	R1101	NRSA63J-100X	MG R	10Ω 1/16W	J		R1485	NRSA63J-562X	MG R	5.6kΩ 1/16W	J
	R1102	NRSA63J-682X	MG R	6.8kΩ 1/16W	J		R1486	NRSA63J-272X	MG R	2.7kΩ 1/16W	J
	R1103	NRSA63J-272X	MG R	2.7kΩ 1/16W	J		R1487	NRSA63J-333X	MG R	33kΩ 1/16W	J
	R1104	NRSA63J-181X	MG R	180Ω 1/16W	J		R1489	NRSA63J-122X	MG R	1.2kΩ 1/16W	J
	R1105	NRSA63J-220X	MG R	22Ω 1/16W	J		R1490	NRSA63J-102X	MG R	1kΩ 1/16W	J
	R1106	NRSA63J-101X	MG R	100Ω 1/16W	J		R1491	NRSA63J-562X	MG R	5.6kΩ 1/16W	J
	R1107	NRSA63J-472X	MG R	4.7kΩ 1/16W	J		R1492	NRSA63J-822X	MG R	8.2kΩ 1/16W	J
	R1108	NRSA63J-222X	MG R	2.2kΩ 1/16W	J		R1493	QRE121J-333Y	C R	33kΩ 1/2W	J
	R1109	NRSA63J-222X	MG R	2.2kΩ 1/16W	J		R1494	QRL039J-470	OM R	47Ω 3W	J
	R1110	NRSA63J-222X	MG R	2.2kΩ 1/16W	J		R1521	NRSA63J-101X	MG R	100Ω 1/16W	J
	R1117	NRSA63J-102X	MG R	1kΩ 1/16W	J		R1522	NRSA63J-102X	MG R	1kΩ 1/16W	J
	R1119	NRSA63J-102X	MG R	1kΩ 1/16W	J		R1524	QRL039J-820	OM R	82Ω 3W	J
	R1120	NRSA63J-471X	MG R	470Ω 1/16W	J		R1526	QRL029J-271	OM R	270Ω 2W	J
	R1150	NRSA63J-331X	MG R	330Ω 1/16W	J		R1527	QRL039J-103	OM R	10kΩ 3W	J
	R1151	NRSA63J-222X	MG R	2.2kΩ 1/16W	J		R1528	QRX029J-R47	MF R	0.47Ω 2W	J
	R1152	NRSA63J-121X	MG R	120Ω 1/16W	J		R1529	QRX029J-R47	MF R	0.47Ω 2W	J
	R1153	NRSA63J-122X	MG R	1.2kΩ 1/16W	J		R1531	NRSA63J-222X	MG R	2.2kΩ 1/16W	J
	R1154	NRSA63J-181X	MG R	180Ω 1/16W	J	△	R1532	QRZ9017-4R7	F R	4.7Ω 1/4W	J
	R1301	NRSA63J-222X	MG R	2.2kΩ 1/16W	J	△	R1540	QRL039J-470	OM R	47Ω 3W	J
	R1302	NRSA63J-222X	MG R	2.2kΩ 1/16W	J		R1541	QRE121J-124Y	C R	120kΩ 1/2W	J
	R1303	NRSA63J-562X	MG R	5.6kΩ 1/16W	J		R1542	QRE121J-124Y	C R	120kΩ 1/2W	J
	R1304	NRSA63J-222X	MG R	2.2kΩ 1/16W	J		R1543	QRE121J-471Y	C R	470Ω 1/2W	J
	R1305	NRSA63J-222X	MG R	2.2kΩ 1/16W	J		R1545	QRE121J-220Y	C R	22Ω 1/2W	J
	R1306	NRSA63J-562X	MG R	5.6kΩ 1/16W	J		R1546	QRE121J-822Y	C R	8.2kΩ 1/2W	J
	R1351	NRSA63J-151X	MG R	150Ω 1/16W	J		R1591	QRE121J-472Y	C R	4.7kΩ 1/2W	J
	R1352	QRL029J-123	OM R	12kΩ 2W	J		R1592	QRZ0221-3R9	OM R	3.9Ω 2W	J
	R1353	NRSA63J-182X	MG R	1.8kΩ 1/16W	J		R1593	NRSA63J-821X	MG R	820Ω 1/16W	J
	R1354	NRSA63J-331X	MG R	330Ω 1/16W	J		R1594	QRE121J-183Y	C R	18kΩ 1/2W	J
	R1355	NRSA63J-101X	MG R	100Ω 1/16W	J		R1595	NRSA63J-222X	MG R	2.2kΩ 1/16W	J
	R1356	QRE121J-102Y	C R	1kΩ 1/2W	J		R1602	NRSA63J-271X	MG R	270Ω 1/16W	J
	R1357	QRZ0107-152Z	C R	1.5kΩ 1W	K		R1603	NRSA63J-101X	MG R	100Ω 1/16W	J
	R1358	QRE121J-272Y	C R	2.7kΩ 1/2W	J		R1604	NRSA63J-101X	MG R	100Ω 1/16W	J
	R1359	QRE121J-561Y	C R	560Ω 1/2W	J		R1621	NRSA63J-0R0X	MG R	0.0Ω 1/16W	J
	R1361	NRSA63J-151X	MG R	150Ω 1/16W	J		R1622	NRSA63J-0R0X	MG R	0.0Ω 1/16W	J
	R1362	QRL029J-123	OM R	12kΩ 2W	J		R1623	NRSA63J-473X	MG R	47kΩ 1/16W	J
	R1363	NRSA63J-182X	MG R	1.8kΩ 1/16W	J		R1624	NRSA63J-101X	MG R	100Ω 1/16W	J
	R1364	NRSA63J-331X	MG R	330Ω 1/16W	J		R1625	NRSA63J-101X	MG R	100Ω 1/16W	J
	R1365	NRSA63J-101X	MG R	100Ω 1/16W	J		R1626	NRSA63J-102X	MG R	1kΩ 1/16W	J
	R1366	QRE121J-102Y	C R	1kΩ 1/2W	J		R1627	NRSA63J-102X	MG R	1kΩ 1/16W	J
	R1367	QRZ0107-152Z	C R	1.5kΩ 1W	K		R1628	NRSA63J-103X	MG R	10kΩ 1/16W	J
	R1368	NRSA63J-332X	MG R	3.3kΩ 1/16W	J		R1650	NRSA63J-103X	MG R	10kΩ 1/16W	J
△	R1369	QRZ9017-150	F R	15Ω 1/2W	K		R1651	NRSA63J-822X	MG R	8.2kΩ 1/16W	J
	R1370	NRSA63J-151X	MG R	150Ω 1/16W	J		R1652	NRSA63J-104X	MG R	100kΩ 1/16W	J
	R1371	QRL029J-123	OM R	12kΩ 2W	J		R1653	NRSA63J-392X	MG R	3.9kΩ 1/16W	J
	R1372	NRSA63J-182X	MG R	1.8kΩ 1/16W	J		R1654	NRSA63J-103X	MG R	10kΩ 1/16W	J
	R1373	NRSA63J-331X	MG R	330Ω 1/16W	J		R1655	NRSA63J-822X	MG R	8.2kΩ 1/16W	J
	R1374	NRSA63J-101X	MG R	100Ω 1/16W	J		R1656	NRSA63J-822X	MG R	8.2kΩ 1/16W	J
	R1375	QRE121J-102Y	C R	1kΩ 1/2W	J		R1657	NRSA63J-822X	MG R	8.2kΩ 1/16W	J
	R1376	QRZ0107-152Z	C R	1.5kΩ 1W	K		R1658	NRSA63J-822X	MG R	8.2kΩ 1/16W	J
	R1377	NRSA63J-330X	MG R	33Ω 1/16W	J		R1660	NRSA63J-103X	MG R	10kΩ 1/16W	J
	R1378	NRSA63J-223X	MG R	22kΩ 1/16W	J		R1661	NRSA63J-683X	MG R	68kΩ 1/16W	J
	R1379	NRSA63J-103X	MG R	10kΩ 1/16W	J		R1662	NRSA63J-333X	MG R	33kΩ 1/16W	J
	R1383	QRE121J-394Y	C R	390kΩ 1/2W	J		R1663	NRSA63J-103X	MG R	10kΩ 1/16W	J
	R1384	NRSA63J-103X	MG R	10kΩ 1/16W	J		R1664	NRSA63J-222X	MG R	2.2kΩ 1/16W	J
	R1385	NRSA63J-273X	MG R	27kΩ 1/16W	J		R1686	NRSA63J-102X	MG R	1kΩ 1/16W	J
	R1386	NRSA63J-393X	MG R	39kΩ 1/16W	J		R1687	NRSA63J-103X	MG R	10kΩ 1/16W	J
	R1401	NRSA63J-224X	MG R	220kΩ 1/16W	J		R1688	NRSA63J-273X	MG R	27kΩ 1/16W	J
	R1403	NRSA63J-0R0X	MG R	0.0Ω 1/16W	J		R1690	NRSA63J-104X	MG R	100kΩ 1/16W	J
	R1405	NRSA63J-682X	MG R	6.8kΩ 1/16W	J		R1697	NRSA63J-103X	MG R	10kΩ 1/16W	J
	R1406	NRSA63J-123X	MG R	12kΩ 1/16W	J		R1698	NRSA63J-104X	MG R	100kΩ 1/16W	J
	R1408	NRSA63J-682X	MG R	6.8kΩ 1/16W	J		R1699	NRSA63J-104X	MG R	100kΩ 1/16W	J
	R1410	NRSA63J-123X	MG R	12kΩ 1/16W	J		R1701	NRSA63J-101X	MG R	100Ω 1/16W	J
	R1411	QRG01GJ-221	OM R	220Ω 1W	J		R1702	NRSA63J-101X	MG R	100Ω 1/16W	J
	R1412	QRE121J-1R0Y	C R	1Ω 1/2W	J		R1703	NRSA63J-101X	MG R	100Ω 1/16W	J
	R1413	QRX01GJ-2R7	MF R	2.7Ω 1W	J		R1704	NRSA63J-102X	MG R	1kΩ 1/16W	J
	R1414	QRE121J-8R2Y	C R	8.2Ω 1/2W	J		R1705	NRSA63J-102X	MG R	1kΩ 1/16W	J

△ Symbol No.	Part No.	Part Name	Description	Local
RESISTOR				
R1706	NRSA63J-102X	MG R	1kΩ 1/16W J	
R1707	NRSA63J-472X	MG R	4.7kΩ 1/16W J	
R1708	NRSA63J-472X	MG R	4.7kΩ 1/16W J	
R1709	NRSA63J-472X	MG R	4.7kΩ 1/16W J	
R1710	NRSA63J-472X	MG R	4.7kΩ 1/16W J	
R1711	NRSA63J-101X	MG R	100Ω 1/16W J	
R1712	NRSA63J-101X	MG R	100Ω 1/16W J	
R1713	NRSA63J-101X	MG R	100Ω 1/16W J	
R1714	NRSA63J-101X	MG R	100Ω 1/16W J	
R1715	NRSA63J-103X	MG R	10kΩ 1/16W J	
R1716	NRSA63J-103X	MG R	10kΩ 1/16W J	
R1717	NRSA63J-103X	MG R	10kΩ 1/16W J	
R1718	NRSA63J-221X	MG R	220Ω 1/16W J	
R1719	NRSA63J-221X	MG R	220Ω 1/16W J	
R1720	NRSA63J-102X	MG R	1kΩ 1/16W J	
R1721	NRSA63J-221X	MG R	220Ω 1/16W J	
R1722	NRSA63J-221X	MG R	220Ω 1/16W J	
R1723	NRSA63J-221X	MG R	220Ω 1/16W J	
R1724	NRSA63J-221X	MG R	220Ω 1/16W J	
R1725	NRSA63J-103X	MG R	10kΩ 1/16W J	
R1726	NRSA63J-472X	MG R	4.7kΩ 1/16W J	
R1727	NRSA63J-104X	MG R	100kΩ 1/16W J	
R1728	NRSA63J-103X	MG R	10kΩ 1/16W J	
R1729	NRSA63J-470X	MG R	47Ω 1/16W J	
R1730	NRSA63J-223X	MG R	22kΩ 1/16W J	
R1731	NRSA63J-101X	MG R	100Ω 1/16W J	
R1732	NRSA02F-393X	MG R	39kΩ 1/10W F	
R1733	NRSA63J-273X	MG R	27kΩ 1/16W J	
R1734	NRSA63J-391X	MG R	390Ω 1/16W J	
R1735	NRSA63J-104X	MG R	100kΩ 1/16W J	
R1736	NRSA63J-333X	MG R	33kΩ 1/16W J	
R1737	NRSA63J-272X	MG R	2.7kΩ 1/16W J	
R1738	NRSA63J-0R0X	MG R	0.0Ω 1/16W J	
R1739	NRSA63J-101X	MG R	100Ω 1/16W J	
R1740	NRSA63J-101X	MG R	100Ω 1/16W J	
R1741	NRSA63J-101X	MG R	100Ω 1/16W J	
R1742	NRSA63J-0R0X	MG R	0.0Ω 1/16W J	
R1743	NRSA63J-681X	MG R	680Ω 1/16W J	
R1744	NRSA63J-561X	MG R	560Ω 1/16W J	
R1745	NRSA63J-105X	MG R	1MΩ 1/16W J	
R1746	NRSA63J-333X	MG R	33kΩ 1/16W J	
R1747	NRSA63J-103X	MG R	10kΩ 1/16W J	
R1748	NRSA02J-475X	MG R	4.7MΩ 1/10W J	
R1749	NRSA02J-475X	MG R	4.7MΩ 1/10W J	
R1750	NRSA63J-0R0X	MG R	0.0Ω 1/16W J	
R1755	NRSA63J-101X	MG R	100Ω 1/16W J	
R1756	NRSA63J-101X	MG R	100Ω 1/16W J	
R1757	NRSA63J-222X	MG R	2.2kΩ 1/16W J	
R1758	NRSA63J-222X	MG R	2.2kΩ 1/16W J	
R1760	NRSA63J-682X	MG R	6.8kΩ 1/16W J	
R1770	QRE121J-271Y	C R	270Ω 1/2W J	
R1771	NRSA63J-102X	MG R	1kΩ 1/16W J	
R1772	QRE121J-271Y	C R	270Ω 1/2W J	
R1773	NRSA63J-102X	MG R	1kΩ 1/16W J	
R1775	NRSA63J-332X	MG R	3.3kΩ 1/16W J	
R1776	NRSA63J-392X	MG R	3.9kΩ 1/16W J	
R1777	NRSA63J-682X	MG R	6.8kΩ 1/16W J	
R1779	NRSA63J-272X	MG R	2.7kΩ 1/16W J	
R1780	NRSA63J-471X	MG R	470Ω 1/16W J	
R1781	NRSA63J-122X	MG R	1.2kΩ 1/16W J	
R1782	NRSA63J-181X	MG R	180Ω 1/16W J	
R1783	NRSA63J-221X	MG R	220Ω 1/16W J	
R1784	NRSA63J-331X	MG R	330Ω 1/16W J	
R1785	NRSA63J-471X	MG R	470Ω 1/16W J	
R1803	NRSA63J-333X	MG R	33kΩ 1/16W J	
R1804	NRSA63J-750X	MG R	75Ω 1/16W J	
R1805	NRSA63J-750X	MG R	75Ω 1/16W J	
R1806	NRSA63J-750X	MG R	75Ω 1/16W J	
R1807	NRSA63J-750X	MG R	75Ω 1/16W J	
R1808	NRSA63J-823X	MG R	82kΩ 1/16W J	
R1809	NRSA63J-391X	MG R	390Ω 1/16W J	
R1810	NRSA63J-823X	MG R	82kΩ 1/16W J	

△ Symbol No.	Part No.	Part Name	Description	Local
RESISTOR				
R1811	NRSA63J-391X	MG R	390Ω 1/16W J	
R1812	NRSA63J-104X	MG R	100kΩ 1/16W J	
R1813	NRSA63J-222X	MG R	2.2kΩ 1/16W J	
R1815	NRSA63J-101X	MG R	100Ω 1/16W J	
R1818	NRSA63J-222X	MG R	2.2kΩ 1/16W J	
R1820	NRSA63J-101X	MG R	100Ω 1/16W J	
R1821	NRSA63J-222X	MG R	2.2kΩ 1/16W J	
R1823	NRSA63J-101X	MG R	100Ω 1/16W J	
R1824	NRSA63J-222X	MG R	2.2kΩ 1/16W J	
R1826	NRSA63J-101X	MG R	100Ω 1/16W J	
R1829	NRSA63J-750X	MG R	75Ω 1/16W J	
R1830	NRSA63J-222X	MG R	2.2kΩ 1/16W J	
R1831	NRSA63J-222X	MG R	2.2kΩ 1/16W J	
R1832	NRSA63J-122X	MG R	1.2kΩ 1/16W J	
R1833	NRSA63J-102X	MG R	1kΩ 1/16W J	
R1834	NRSA63J-562X	MG R	5.6kΩ 1/16W J	
R1835	NRSA63J-562X	MG R	5.6kΩ 1/16W J	
R1836	NRSA63J-750X	MG R	75Ω 1/16W J	
R1837	NRSA63J-101X	MG R	100Ω 1/16W J	
R1838	QRK126J-121X	UNF R	120Ω 1/2W J	
R1839	QRE121J-221Y	C R	220Ω 1/2W J	
R1840	QRE121J-221Y	C R	220Ω 1/2W J	
R1841	NRSA63J-0R0X	MG R	0.0Ω 1/16W J	
R1842	NRSA63J-0R0X	MG R	0.0Ω 1/16W J	
R1843	NRSA63J-821X	MG R	820Ω 1/16W J	
R1844	NRSA63J-222X	MG R	2.2kΩ 1/16W J	
R1845	NRSA63J-102X	MG R	1kΩ 1/16W J	
R1846	NRSA63J-222X	MG R	2.2kΩ 1/16W J	
R1847	NRSA63J-103X	MG R	10kΩ 1/16W J	
R1848	NRSA63J-471X	MG R	470Ω 1/16W J	
R1849	NRSA63J-221X	MG R	220Ω 1/16W J	
R1880	NRSA63J-202X	MG R	2kΩ 1/16W J	
R1881	NRSA63J-103X	MG R	10kΩ 1/16W J	
R1882	NRSA63J-471X	MG R	470Ω 1/16W J	
R1883	NRSA63J-181X	MG R	180Ω 1/16W J	
R1902	QRF154K-2R2	UNF R	2.2Ω 15W K	
R1904	QRE121J-681Y	C R	680Ω 1/2W J	
R1905	QRM034J-R15	MP R	0.15Ω 3W J	
R1906	QRT029J-1R0	MF R	1Ω 2W J	
R1907	NRSA63J-563X	MG R	56kΩ 1/16W J	
R1908	QRL039J-333	OM R	33kΩ 3W J	
R1909	QRE121J-274Y	C R	270kΩ 1/2W J	
R1910	QRE121J-822Y	C R	8.2kΩ 1/2W J	
R1911	QRE121J-562Y	C R	5.6kΩ 1/2W J	
R1912	NRSA63J-182X	MG R	1.8kΩ 1/16W J	
R1913	QRE121J-1R2Y	C R	1.2Ω 1/2W J	
△ R1915	QRZ0107-474Z	C R	470kΩ 1W K	
R1916	QRE121J-224Y	C R	220kΩ 1/2W J	
R1952	NRSA63J-332X	MG R	3.3kΩ 1/16W J	
R1953	NRSA63J-101X	MG R	100Ω 1/16W J	
R1957	QRE121J-6R8Y	C R	6.8Ω 1/2W J	
R1960	NRSA63J-391X	MG R	390Ω 1/16W J	
R1961	QRL029J-223	OM R	22kΩ 2W J	
R1962	NRSA63J-561X	MG R	560Ω 1/16W J	
R1963	QRE121J-103Y	C R	10kΩ 1/2W J	
R1964	NRSA63J-473X	MG R	47kΩ 1/16W J	
R1965	NRSA63J-0R0X	MG R	0.0Ω 1/16W J	
R1966	NRSA63J-682X	MG R	6.8kΩ 1/16W J	
R1967	NRSA63J-473X	MG R	47kΩ 1/16W J	
R1970	NRSA63J-153X	MG R	15kΩ 1/16W J	
R1971	NRSA63J-183X	MG R	18kΩ 1/16W J	
R1972	NRSA63J-391X	MG R	390Ω 1/16W J	
△ R1991	QRZ9046-825Z	C R	8.2MΩ 1W J	
CAPACITOR				
C1001	NCB31HK-103X	C CAP.	0.01μF 50V K	
C1002	QETN1HM-106Z	E CAP.	10μF 50V M	
C1003	QFV71HJ-104Z	MF CAP.	0.1μF 50V J	
C1004	QETN1CM-477Z	E CAP.	470μF 16V M	
C1005	NCB31HK-222X	C CAP.	2200pF 50V K	
C1006	QETN1CM-336Z	E CAP.	33μF 16V M	
C1007	NCB31HK-103X	C CAP.	0.01μF 50V K	
C1101	NCB31HK-472X	C CAP.	4700pF 50V K	

△ Symbol No.	Part No.	Part Name	Description	Local	△ Symbol No.	Part No.	Part Name	Description	Local
CAPACITOR					CAPACITOR				
C1102	NCB31HK-472X	C CAP.	4700pF	50V K	C1622	NCB31HK-102X	C CAP.	1000pF	50V K
C1103	NCB31HK-472X	C CAP.	4700pF	50V K	C1625	NCF21EZ-474X	C CAP.	0.47μF	25V Z
C1104	NCB31HK-472X	C CAP.	4700pF	50V K	C1626	NCB31HK-333X	C CAP.	0.047μF	50V K
C1106	NDC31HJ-180X	C CAP.	18pF	50V J	C1627	NCB31HK-473X	C CAP.	0.033μF	50V K
C1107	NCB31HK-103X	C CAP.	0.01μF	50V K	C1628	NCB21HK-823X	C CAP.	0.082μF	50V K
C1109	QETN1HM-106Z	E CAP.	10μF	50V M	C1629	NCB31HK-222X	C CAP.	2200pF	50V K
C1150	NCB31HK-472X	C CAP.	4700pF	50V K	C1630	NCB31HK-104X	C CAP.	0.1μF	50V K
C1151	NCB31HK-472X	C CAP.	4700pF	50V K	C1631	QETN1HM-475Z	E CAP.	4.7μF	50V M
C1308	NCB31HK-103X	C CAP.	0.01μF	50V K	C1632	QETN1HM-475Z	E CAP.	4.7μF	50V M
C1310	NRSA63J-0R0X	MG R	0.0Ω	1/16W J	C1633	QETN1HM-475Z	E CAP.	4.7μF	50V M
C1350	NDC21HJ-471X	C CAP.	470pF	50V J	C1634	QETN1HM-475Z	E CAP.	4.7μF	50V M
C1351	NDC31HJ-561X	C CAP.	560pF	50V J	C1635	QETN1HM-475Z	E CAP.	4.7μF	50V M
C1352	QETN2EM-475Z	E CAP.	4.7μF	250V M	C1636	QETN1HM-475Z	E CAP.	4.7μF	50V M
C1353	QETN1HM-107Z	E CAP.	100μF	50V M	C1637	QETN1HM-475Z	E CAP.	4.7μF	50V M
C1354	QETN1HM-105Z	E CAP.	1μF	50V M	C1638	QETN1HM-475Z	E CAP.	4.7μF	50V M
C1360	NDC21HJ-471X	C CAP.	470pF	50V J	C1639	QETN1HM-107Z	E CAP.	100μF	50V M
C1361	NDC31HJ-561X	C CAP.	560pF	50V J	C1640	NCF21HZ-334X	C CAP.	0.33μF	50V Z
C1370	NDC21HJ-471X	C CAP.	470pF	50V J	C1641	QETN1HM-475Z	E CAP.	4.7μF	50V M
C1371	NDC31HJ-681X	C CAP.	680pF	50V J	C1642	QETN1HM-106Z	E CAP.	10μF	50V M
C1374	QCZ0364-222	C CAP.	2200pF		C1643	NCB31HK-104X	C CAP.	0.1μF	50V K
C1375	QETN1CM-477Z	E CAP.	470μF	16V M	C1644	NCB31HK-222X	C CAP.	2200pF	50V K
C1401	QETN1HM-105Z	E CAP.	1μF	50V M	C1645	NCB31HK-104X	C CAP.	0.1μF	50V K
C1402	QCB31HK-682Z	C CAP.	6800pF	50V K	C1646	NCB31HK-104X	C CAP.	0.1μF	50V K
C1403	QEHR1VM-227Z	E CAP.	220μF	35V M	C1647	NCF21EZ-474X	C CAP.	0.47μF	25V Z
C1406	QFLC2AJ-683Z	M CAP.	0.068μF	100V J	C1650	QETN1HM-106Z	E CAP.	10μF	50V M
C1407	QCS32HJ-180Z	C CAP.	18pF	500V J	C1651	QEHR1HM-107Z	E CAP.	100μF	50V M
C1408	QFV71HJ-184Z	MF CAP.	0.18μF	50V J	C1652	QETN1HM-106Z	E CAP.	10μF	50V M
C1411	NCF21HZ-334X	C CAP.	0.33μF	50V Z	C1654	QETM1VM-228	E CAP.	2200μF	35V M
C1412	NCF21HZ-334X	C CAP.	0.33μF	50V Z	C1655	QEHQ1VM-108	E CAP.	1000μF	35V M
C1413	QFLC2AJ-563Z	M CAP.	0.056μF	100V J	C1656	QEHQ1VM-108	E CAP.	1000μF	35V M
C1422	QEHQ1VM-108	E CAP.	1000μF	35V M	C1657	QETN1HM-106Z	E CAP.	10μF	50V M
C1480	QETN1HM-106Z	E CAP.	10μF	50V M	C1662	QEHR1HM-106Z	E CAP.	10μF	50V M
C1483	QEZ0195-475Z	BP E CAP.	4.7μF	50V M	C1681	QETN1CM-227Z	E CAP.	220μF	16V M
C1485	QETN1HM-226Z	E CAP.	22μF	50V M	C1682	QETN1CM-227Z	E CAP.	220μF	16V M
C1521	QETN1VM-476Z	E CAP.	47μF	35V M	C1683	QETN1CM-336Z	E CAP.	33μF	16V M
C1522	QFLC1HJ-332Z	M CAP.	3300pF	50V J	C1684	QETN1HM-106Z	E CAP.	10μF	50V M
C1523	QFLC1HJ-223Z	M CAP.	0.022μF	50V J	C1685	NRSA63J-0R0X	MG R	0.0Ω	1/16W J
C1524	QFZ0200-452	MPP CAP.	4500pF	1.5kVH±3%	C1686	NRSA63J-0R0X	MG R	0.0Ω	1/16W J
C1525	QFZ0200-113	MPP CAP.	0.011μF	1.5kVH±3%	C1701	QETN1CM-227Z	E CAP.	220μF	16V M
C1526	QFP32GJ-183	PP CAP.	0.018μF	400V J	C1702	QETN1HM-106Z	E CAP.	10μF	50V M
C1527	QFZ0199-154	MPP CAP.	0.15μF	AC250V J	C1703	NDC31HJ-330X	C CAP.	33pF	50V J
C1528	QFZ0199-224	MPP CAP.	0.22μF	AC250V J	C1704	NDC31HJ-330X	C CAP.	33pF	50V J
C1529	QENC2AM-225Z	BP E CAP.	2.2μF	100V M	C1705	NCB31HK-102X	C CAP.	1000pF	50V K
C1530	QCB32HK-561Z	C CAP.	560pF	500V K	C1706	NCB21EK-224X	C CAP.	0.22μF	25V K
C1531	QEHR1EM-108Z	E CAP.	1000μF	25V M	C1707	QETN1CM-107Z	E CAP.	100μF	16V M
C1533	QEHR1EM-108Z	E CAP.	1000μF	25V M	C1709	QETN1CM-107Z	E CAP.	100μF	16V M
C1535	QCB32HK-101Z	C CAP.	100pF	500V K	C1710	NCB21EK-224X	C CAP.	0.22μF	25V K
C1536	QFLC1HJ-103Z	M CAP.	0.01μF	50V J	C1711	NCB31CK-104X	C CAP.	0.1μF	16V K
C1540	QFV71HJ-104Z	MF CAP.	0.1μF	50V J	C1713	NCB31CK-104X	C CAP.	0.1μF	16V K
C1541	QETN2EM-226Z	E CAP.	22μF	250V M	C1714	QETN1CM-476Z	E CAP.	47μF	16V M
C1542	QETN2EM-226Z	E CAP.	22μF	250V M	C1720	QETN1CM-476Z	E CAP.	47μF	16V M
C1550	NCB31CK-104X	C CAP.	0.1μF	16V K	C1725	NCB31HK-681X	C CAP.	680pF	50V K
C1591	QETN1AM-107Z	E CAP.	100μF	10V M	C1730	NCB21EK-224X	C CAP.	0.22μF	25V K
C1592	QETM2CM-227	E CAP.	220μF	160V M	C1731	NCB21EK-224X	C CAP.	0.22μF	25V K
C1593	QETN1EM-476Z	E CAP.	47μF	25V M	C1732	QETN1CM-107Z	E CAP.	100μF	16V M
C1602	NCB31HK-103X	C CAP.	0.01μF	50V K	C1733	NCB31CK-104X	C CAP.	0.1μF	16V K
C1603	QETN1CM-107Z	E CAP.	100μF	16V M	C1734	NCB31HK-222X	C CAP.	2200pF	50V K
C1604	NCB31HK-104X	C CAP.	0.1μF	50V K	C1735	NCB31HK-222X	C CAP.	2200pF	50V K
C1606	NDC31HJ-2R0X	C CAP.	2.0pF	50V J	C1736	QETN1HM-105Z	E CAP.	1μF	50V M
C1607	NDC31HJ-2R0X	C CAP.	2.0pF	50V J	C1737	QETN1HM-105Z	E CAP.	1μF	50V M
C1608	NCB31HK-103X	C CAP.	0.01μF	50V K	C1738	NCB31CK-104X	C CAP.	0.1μF	16V K
C1609	NCB31HK-103X	C CAP.	0.01μF	50V K	C1739	NFV41CJ-104X	MPP CAP.	0.1μF	16V J
C1610	QETN1HM-106Z	E CAP.	10μF	50V M	C1740	QETN1HM-225Z	E CAP.	2.2μF	50V M
C1611	NCB31CK-104X	C CAP.	0.1μF	16V K	C1741	NCB31CK-104X	C CAP.	0.1μF	16V K
C1612	QETN1HM-106Z	E CAP.	10μF	50V M	C1742	NCB31CK-104X	C CAP.	0.1μF	16V K
C1613	NCB31CK-104X	C CAP.	0.1μF	16V K	C1743	QETN1CM-107Z	E CAP.	100μF	16V M
C1615	QETN1HM-106Z	E CAP.	10μF	50V M	C1744	NCB31HK-102X	C CAP.	1000pF	50V K
C1616	NCB31CK-104X	C CAP.	0.1μF	16V K	C1745	NCB31EK-473X	C CAP.	0.047μF	25V K
C1617	QETN1HM-106Z	E CAP.	10μF	50V M	C1746	NCB31EK-473X	C CAP.	0.047μF	25V K
C1619	NCB31CK-104X	C CAP.	0.1μF	16V K	C1747	NCB31EK-473X	C CAP.	0.047μF	25V K
C1620	QETN1HM-106Z	E CAP.	10μF	50V M	C1748	QETN1CM-476Z	E CAP.	47μF	16V M
C1621	NCB31HK-102X	C CAP.	1000pF	50V K	C1749	QETN1HM-106Z	E CAP.	10μF	50V M

△	Symbol No.	Part No.	Part Name	Description	Local
CAPACITOR					
	C1751	NCB31CK-104X	C CAP.	0.1μF 16V	K
	C1752	NCB31CK-104X	C CAP.	0.1μF 16V	K
	C1753	NCB31CK-104X	C CAP.	0.1μF 16V	K
	C1760	NCB31HK-104X	C CAP.	0.1μF 50V	K
	C1761	QETN1CM-107Z	E CAP.	100μF 16V	M
	C1770	QETN1HM-106Z	E CAP.	10μF 50V	M
	C1801	QETN1HM-106Z	E CAP.	10μF 50V	M
	C1802	QETN1HM-106Z	E CAP.	10μF 50V	M
	C1803	QETN1HM-106Z	E CAP.	10μF 50V	M
	C1804	QETN1HM-106Z	E CAP.	10μF 50V	M
	C1805	NCB31HK-104X	C CAP.	0.1μF 50V	K
	C1807	NCF31AZ-105X	C CAP.	1μF 10V	Z
	C1808	NCF31AZ-105X	C CAP.	1μF 10V	Z
	C1810	NCF31AZ-105X	C CAP.	1μF 10V	Z
	C1811	NCB31HK-104X	C CAP.	0.1μF 50V	K
	C1812	NCF31AZ-105X	C CAP.	1μF 10V	Z
	C1813	NCB31HK-103X	C CAP.	0.01μF 50V	K
	C1814	NCB31HK-104X	C CAP.	0.1μF 50V	K
	C1815	NCF31AZ-105X	C CAP.	1μF 10V	Z
	C1817	NCF31AZ-105X	C CAP.	1μF 10V	Z
	C1819	NCB31HK-104X	C CAP.	0.1μF 50V	K
	C1820	NCF31AZ-105X	C CAP.	1μF 10V	Z
	C1821	NCF31AZ-105X	C CAP.	1μF 10V	Z
	C1822	QETN1CM-477Z	E CAP.	470μF 16V	M
	C1823	QETN1CM-107Z	E CAP.	100μF 16V	M
	C1824	QETN1CM-107Z	E CAP.	100μF 16V	M
	C1825	NCB31HK-103X	C CAP.	0.01μF 50V	K
	C1826	NCB31HK-104X	C CAP.	0.1μF 50V	K
	C1827	NCB31HK-103X	C CAP.	0.01μF 50V	K
	C1829	NCB31HK-103X	C CAP.	0.01μF 50V	K
	C1830	NCB31HK-103X	C CAP.	0.01μF 50V	K
	C1831	NCB31HK-103X	C CAP.	0.01μF 50V	K
	C1833	QETN1HM-226Z	E CAP.	22μF 50V	M
	C1834	NDC31HJ-181X	C CAP.	180pF 50V	J
△	C1901	QFZ9075-104	MPP CAP.	0.1μF	
△	C1902	QFZ9075-473	MPP CAP.	0.047μF	
	C1903	QCZ9015-102Z	C CAP.	1000pF AC250V	Z
	C1904	QCZ9015-102Z	C CAP.	1000pF AC250V	Z
	C1905	QCZ9015-102Z	C CAP.	1000pF AC250V	Z
△	C1906	QFZ9072-224	MM CAP.	0.22μF	
	C1907	QEZ0476-337	E CAP.	330μF 400V	M
	C1908	QFZ0209-272	MPP CAP.	2700pF	
	C1910	NDC31HJ-471X	C CAP.	470pF 50V	J
	C1911	QEHR1EM-227Z	E CAP.	220μF 25V	M
	C1914	QETN1EM-227Z	E CAP.	220μF 25V	M
	C1915	QFLC1HJ-122Z	M CAP.	1200pF 50V	J
	C1952	QCB32HK-471Z	C CAP.	470pF 500V	K
	C1953	QETM1VM-228	E CAP.	2200μF 35V	M
	C1954	NCB31HK-102X	C CAP.	1000pF 50V	K
	C1955	QCB32HK-471Z	C CAP.	470pF 500V	K
	C1956	QETN1VM-227Z	E CAP.	220μF 35V	M
	C1957	QCB32HK-471Z	C CAP.	470pF 500V	K
	C1958	QEHQ1EM-228	E CAP.	2200μF 25V	M
	C1959	QCZ0122-561	C CAP.	560pF 2000V	K
	C1960	QEZ0203-227	E CAP.	220μF 160V	M
	C1961	QETN1HM-225Z	E CAP.	2.2μF 50V	M
	C1962	QETN1HM-106Z	E CAP.	10μF 50V	M
	C1964	QETN1CM-476Z	E CAP.	47μF 16V	M
	C1965	QETN1HM-225Z	E CAP.	2.2μF 50V	M
	C1968	NCB31CK-104X	C CAP.	0.1μF 16V	K
	C1972	QEHR1VM-476Z	E CAP.	47μF 35V	M
	C1973	QEHR1CM-107Z	E CAP.	100μF 16V	M
	C1974	NCB31CK-104X	C CAP.	0.1μF 16V	K
	C1975	QEHR1CM-227Z	E CAP.	220μF 16V	M
	C1976	QEHR1CM-107Z	E CAP.	100μF 16V	M
	C1977	QEHR1AM-477Z	E CAP.	470μF 10V	M
	C1978	NCB31HK-104X	C CAP.	0.1μF 50V	K
	C1980	QETN1CM-107Z	E CAP.	100μF 16V	M
△	C1991	QCZ9079-102	C CAP.	1000pF AC250V	M
△	C1992	QCZ9079-102	C CAP.	1000pF AC250V	M
△	C1993	QCZ9079-102	C CAP.	1000pF AC250V	M

△	Symbol No.	Part No.	Part Name	Description	Local
TRANSFORMER					
	T1521	QQR1229-001	DRIVE TRANSF		
△	T1551	QQH0141-001	FB TRANSF		
△	T1901	QQS0166-001	SW TRANSF		
COIL					
	L1001	CE42050-001Z	BEADS CORE		
	L1002	CE42050-001Z	BEADS CORE		
	L1101	QQLZ014-R82	COIL	0.82μH	
	L1104	QQL244K-180Z	COIL	18μH	K
	L1480	QQR1138-001	CHOKO COIL		
	L1523	QQR1137-005	LINEARITY COIL		
	L1524	QQLZ034-240	COIL	24μH	
	L1540	QQL244J-5R6Z	COIL	5.6μH	J
	L1601	QQL244K-4R7Z	COIL	4.7μH	K
	L1701	QQL244K-100Z	COIL	10μH	K
	L1702	QQL244K-100Z	COIL	10μH	K
	L1731	QQL244J-5R6Z	COIL	5.6μH	J
	L1732	QQL244J-5R6Z	COIL	5.6μH	J
	L1951	QQLZ034-460	COIL	46μH	
	L1953	QQL244J-5R6Z	COIL	5.6μH	J
	L1954	QQL244J-5R6Z	COIL	5.6μH	J
DIODE					
	D1101	DAN235K-X	SI. DIODE		
	D1350	1SS244-T2	SI. DIODE		
	D1352	RGP10J-5025-T3	SI. DIODE		
	D1353	MA1111-X	SI. DIODE		
	D1354	MA1111-X	SI. DIODE		
	D1355	MA1111-X	SI. DIODE		
	D1356	MA1111-X	SI. DIODE		
	D1360	1SS244-T2	SI. DIODE		
	D1370	1SS244-T2	SI. DIODE		
	D1372	MA3075/M/-X	ZENER DIODE		
	D1373	MA1111-X	SI. DIODE		
	D1374	MA1111-X	SI. DIODE		
	D1401	RGP10J-5025-T3	SI. DIODE		
	D1402	MTZJ75-T2	ZENER DIODE		
	D1405	1N4003-T2	SI. DIODE		
	D1408	MA1111-X	SI. DIODE		
	D1480	MTZJ4.3A-T2	ZENER DIODE		
	D1521	RH3G-F1	SI. DIODE		
	D1522	31DF6N-FC5	SI. DIODE		
	D1523	RGP10J-5025-T3	SI. DIODE		
	D1541	RGP10J-5025-T3	SI. DIODE		
	D1550	MA1111-X	SI. DIODE		
	D1551	RGP10J-5025-T3	SI. DIODE		
	D1553	RGP10J-5025-T3	SI. DIODE		
	D1554	RGP10J-5025-T3	SI. DIODE		
	D1592	MA3075/H/-X	ZENER DIODE		
	D1651	MA3330/L/-X	ZENER DIODE		
	D1652	MA3330/L/-X	ZENER DIODE		
	D1653	MA3330/L/-X	ZENER DIODE		
	D1654	MA1111-X	SI. DIODE		
	D1655	MA1111-X	SI. DIODE		
	D1682	MA1111-X	SI. DIODE		
	D1702	MA3024-X	ZENER DIODE		
	D1703	MA3051/M/-X	ZENER DIODE		
	D1704	MA3033-X	ZENER DIODE		
	D1730	MA1111-X	SI. DIODE		
	D1731	MA1111-X	SI. DIODE		
	D1732	MA1111-X	SI. DIODE		
	D1733	MA1111-X	SI. DIODE		
	D1760	SLR-342VR-T16	LED		
	D1770	MA1111-X	SI. DIODE		
	D1771	P1241-04	PHOTO CONDUCTOR		
	D1801	MA3120/M/-X	ZENER DIODE		
	D1802	MA3120/M/-X	ZENER DIODE		
	D1807	MA3100/M/-X	ZENER DIODE		
	D1808	MA3100/M/-X	ZENER DIODE		
	D1901	GSIB460	BRIDGE DIODE		
	D1903	MTZJ12C-T2	ZENER DIODE		

△	Symbol No.	Part No.	Part Name	Description	Local
DIODE					
D1904	EG01C-T2	SI. DIODE	0.0Ω 1/16W J		
D1906	EG01C-T2	SI. DIODE			
D1907	MA3150/M-X	ZENER DIODE			
D1908	MTZJ27B-T2	ZENER DIODE			
D1909	MA111-X	SI. DIODE			
D1910	NRSA63J-0R0X	MG R			
D1911	RGP10J-TS-T3	SI. DIODE			
D1912	1SS133-T2	SI. DIODE			
D1914	ERC30-02L38	SI. DIODE			
D1952	FSF05A20	SI. DIODE			
D1953	RGP10J-5025-T3	SI. DIODE			
D1954	RGP30B-F1	SB DIODE			
D1956	31DF6N-FC5	SI. DIODE			
D1964	MA3330/L-X	ZENER DIODE			
D1965	1SS133-T2	SI. DIODE			
D1966	MA3068/M-X	ZENER DIODE			
D1968	MA111-X	SI. DIODE			
D1969	MA111-X	SI. DIODE			
D1971	MA111-X	SI. DIODE			
TRANSISTOR					
Q1101	2SC5083/L-P/-T	TRANSISTOR			
Q1109	2SB709A/QR/-X	TRANSISTOR			
Q1111	2SD601A/QR/-X	TRANSISTOR			
Q1150	2SD601A/QR/-X	TRANSISTOR			
Q1301	2SB709A/QR/-X	TRANSISTOR			
Q1302	2SB709A/QR/-X	TRANSISTOR			
Q1350	STC344-T	TRANSISTOR			
Q1351	2SA1321-T	TRANSISTOR			
Q1352	2SB709A/QR/-X	TRANSISTOR			
Q1360	STC344-T	TRANSISTOR			
Q1361	2SA1321-T	TRANSISTOR			
Q1370	STC344-T	TRANSISTOR			
Q1371	2SA1321-T	TRANSISTOR			
Q1374	2SD601A/QR/-X	TRANSISTOR			
Q1375	2SD601A/QR/-X	TRANSISTOR			
Q1376	2SD601A/QR/-X	TRANSISTOR			
Q1480	2SD1408/OY/-LB	POW TRANSISTOR			
Q1521	2SC2655/Y/-T	TRANSISTOR			
Q1522	2SD2634-YD	POW TRANSISTOR			
Q1591	2SA1208/ST/Z1-T	TRANSISTOR			
Q1592	UN2212-X	DIGI. TRANSISTOR			
Q1650	DTC323TK-X	DIGI. TRANSISTOR			
Q1651	UN2212-X	DIGI. TRANSISTOR			
Q1660	2SD601A/QR/-X	TRANSISTOR			
Q1661	2SD601A/QR/-X	TRANSISTOR			
Q1683	2SB709A/QR/-X	TRANSISTOR			
Q1684	2SB709A/QR/-X	TRANSISTOR			
Q1685	DTC323TK-X	DIGI. TRANSISTOR			
Q1686	DTC323TK-X	DIGI. TRANSISTOR			
Q1701	2SB709A/QR/-X	TRANSISTOR			
Q1702	2SB709A/QR/-X	TRANSISTOR			
Q1703	FMC2A-X	D.TRANSISTOR			
Q1720	2SB709A/QR/-X	TRANSISTOR			
Q1770	2SB709A/QR/-X	TRANSISTOR			
Q1801	DTC323TK-X	DIGI. TRANSISTOR			
Q1802	DTC323TK-X	DIGI. TRANSISTOR			
Q1803	2SB709A/QR/-X	TRANSISTOR			
Q1804	2SC1740S/QR/-T	TRANSISTOR			
Q1860	2SD601A/QR/-X	TRANSISTOR			
Q1861	2SB709A/QR/-X	TRANSISTOR			
Q1862	2SB709A/QR/-X	TRANSISTOR			
Q1952	2SD601A/QR/-X	TRANSISTOR			
Q1953	2SD601A/QR/-X	TRANSISTOR			
Q1954	2SD601A/QR/-X	TRANSISTOR			

△	Symbol No.	Part No.	Part Name	Description	Local			
IC								
IC1401	AN5522	I.C(MONO-ANA)	(SERVICE)					
IC1480	UPC358G2-XE	I.C(MONOLITHIC)						
IC1601	MSP3445G-QG-B8X	I.C(MONO-ANA)						
IC1602	NJW1136G-X	I.C(MONO-ANA)						
IC1650	AN7585	I.C(MONO-ANA)						
IC1701	TDA9386N23S0901	I.C(MCU)						
IC1702	AT24C08-25L33PH	I.C(MEMORY-OTH)						
IC1760	GP1UM281QK	IR DETECT UNIT						
IC1801	MM1492AF	I.C(MONO-ANA)						
IC1901	STR-F6709A/F7	I.C(HYBRID)						
IC1951	SE135N	I.C(HYBRID)						
IC1972	R1141Q331B-X	REGULATE						
IC1974	AN80T36	REG IC						
OTHERS								
		LC30114-001C-H	LED HOLDER					
		CM35921-005-H	CDS HOLDER					
CF1106	QAX0639-001Z	C TRAP						
CL1001	QZW0027-002	WIRE CLAMP						
CL1002	QZW0027-004	WIRE CLAMP						
CL1003	QZW0027-004	WIRE CLAMP						
△ CP1951	ICP-N75-Y	IC PROTECTOR						
△ CP1952	ICP-N50-Y	IC PROTECTOR						
△ CP1953	ICP-N75-Y	IC PROTECTOR						
△ F1901	QMF51E2-4R0J4	FUSE						
FC1901	CEMG002-001Z	FUSE CLIP						
J1770	QNS0155-001	3.5 JACK						
J1771	QNN0282-003	PIN JACK						
J1772	QNN0282-002	PIN JACK						
J1773	QNN0282-001	PIN JACK						
J1774	QNS0100-001	3.5 JACK						
J1801	QNN0349-001	PIN JACK						
J1802	QNN0349-002	PIN JACK						
J1803	QNN0348-001	PIN JACK						
J1804	QNN0349-001	PIN JACK						
K1401	QQR1113-001Z	FERRITE BEADS						
K1402	QQR1113-001Z	FERRITE BEADS						
K1701	QQR1113-001Z	FERRITE BEADS						
K1901	QQR1113-001Z	FERRITE BEADS						
K1902	QQR1114-001Z	FERRITE BEADS						
K1903	QQR1114-001Z	FERRITE BEADS						
K1951	QQR1113-001Z	FERRITE BEADS						
K1953	QQR1113-001Z	FERRITE BEADS						
K1954	QQR1113-001Z	FERRITE BEADS						
K1955	QQR1214-001Y	FERRITE BEADS						
△ LF1901	QQR0673-004	LINE FILTER						
△ LF1902	QQR1035-002	LINE FILTER						
△ PC1901	PC123F2	IC(PHOTO COUPLE)						
△ RY1901	QSK0092-001	RELAY						
S1780	QSW0619-003Z	TACT SWITCH						
S1781	QSW0619-003Z	TACT SWITCH						
S1782	QSW0619-003Z	TACT SWITCH						
S1783	QSW0619-003Z	TACT SWITCH						
S1784	QSW0619-003Z	TACT SWITCH						
△ S1901	QSW0846-001	PUSH SWITCH						
SF1101	QAX0663-001	SAW FILTER						
SF1102	QAX0731-001	SAW FILTER						
△ SK1351	QNZ0537-001	CRT SOCKET						
TH1901	QAD0134-4R5	P THERMISTOR						
TU1001	QAU0251-002	TUNER						
△ VA1901	QAF0052-621	VARIATOR						
W1008	NRSA63J-0R0X	MG R						
W1071	NRSA63J-0R0X	MG R						
W1239	NRSA63J-0R0X	MG R						
W1257	NRSA63J-0R0X	MG R						
W1258	NRSA63J-0R0X	MG R						
W1301	NRSA63J-0R0X	MG R						
W1307	NRSA63J-0R0X	MG R						
W1309	NRSA63J-0R0X	MG R						
W1322	NRSA63J-0R0X	MG R						
W1325	NRSA63J-0R0X	MG R						

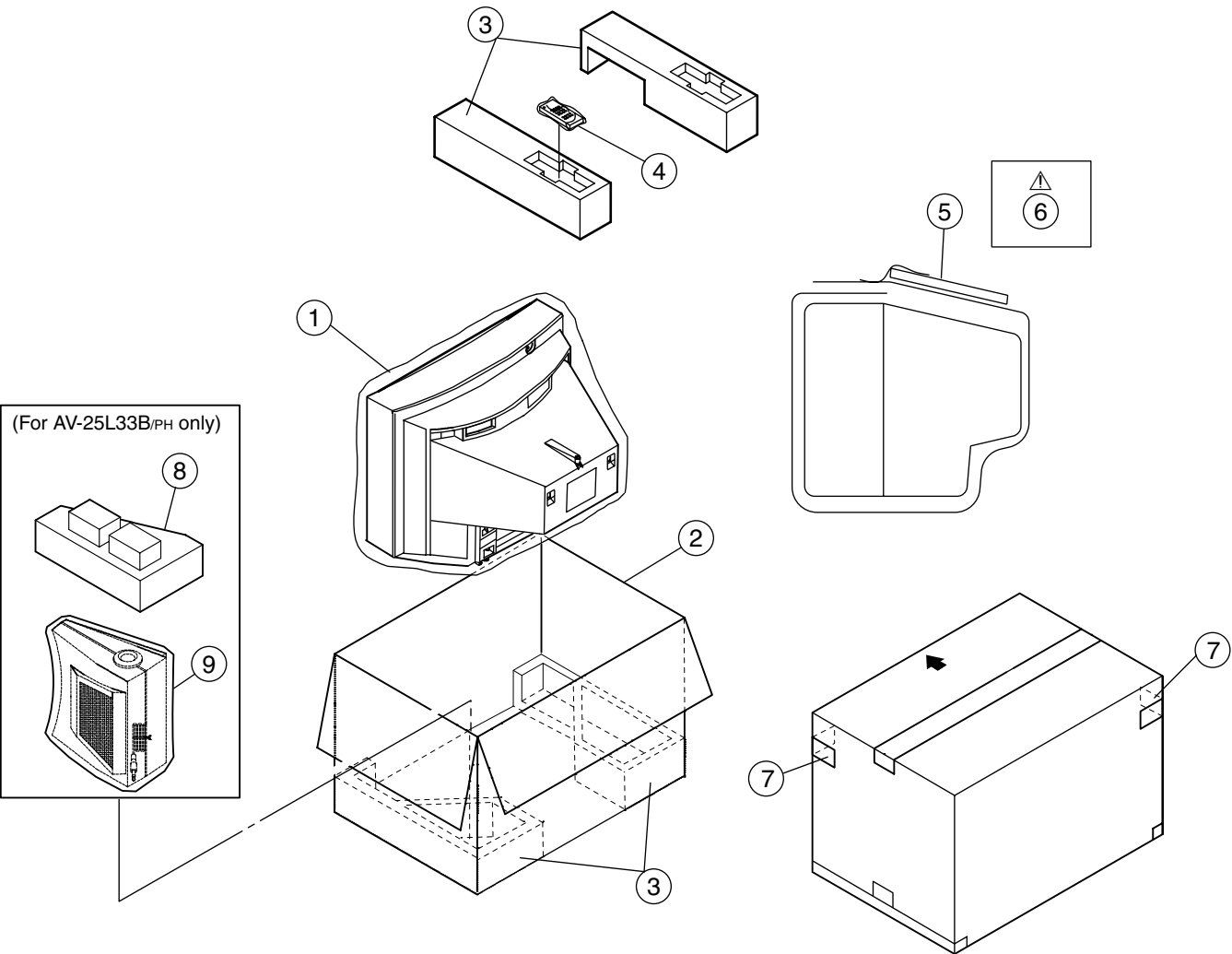
⚠	Symbol No.	Part No.	Part Name	Description	Local
OTHERS					
	W1326	NRSA63J-0R0X	MG R	0.0Ω 1/16W	J
	W1330	NRSA63J-0R0X	MG R	0.0Ω 1/16W	J
	W1333	NRSA63J-0R0X	MG R	0.0Ω 1/16W	J
	W1375	NRSA63J-0R0X	MG R	0.0Ω 1/16W	J
	W1379	NRSA63J-0R0X	MG R	0.0Ω 1/16W	J
	W1388	NRSA63J-0R0X	MG R	0.0Ω 1/16W	J
	W1416	NRSA63J-0R0X	MG R	0.0Ω 1/16W	J
	W1418	NRSA63J-0R0X	MG R	0.0Ω 1/16W	J
	W1428	NRSA63J-0R0X	MG R	0.0Ω 1/16W	J
	W1430	NRSA63J-0R0X	MG R	0.0Ω 1/16W	J
	X1601	CE42546-001Z	X TAL		
	X1701	QAX0737-001	CRYSTAL		
	Y1004	NRSA63J-0R0X	MG R	0.0Ω 1/16W	J
	Y1301	NRSA63J-0R0X	MG R	0.0Ω 1/16W	J

REMOTE CONTROL UNIT PARTS LIST (RM-C1018-1H)

⚠	Ref.No	Part No.	Part Name	Description	Local
		25-1168F	BATTERY COVER		

⚠	Symbol No.	Part No.	Part Name	Description	Local
---	------------	----------	-----------	-------------	-------

PACKING



PACKING PARTS LIST

△ Ref.No.	Part No.	Part Name	Description	Local
1	CP30967-004-H	POLY BAG		
2	GG10044-046A-H	P CASE	[AV-25L33 _{PH}]	
2	GG10044-052A-H	P CASE	[AV-25L33B _{PH}]	
3	GG10135-001B-H	CUSHION ASSY		
4	RM-C1019-1H	RC HAND UNIT	[AV-25L33 _{PH}]	
4	RM-C1018-1H	RC HAND UNIT	[AV-25L33B _{PH}]	
5	CP30966-001-H	POLY BAG		
△ 6	LCT1180-001A-H	INST BOOK		
7	GG20025-001A-H	CORNER LABEL	(x2)	
8	GG10142-001B-H	BASS TOP CUSHION	[AV-25L33B _{PH}]	
9	CP30967-002-H	POLY BAG	[AV-25L33B _{PH}]	